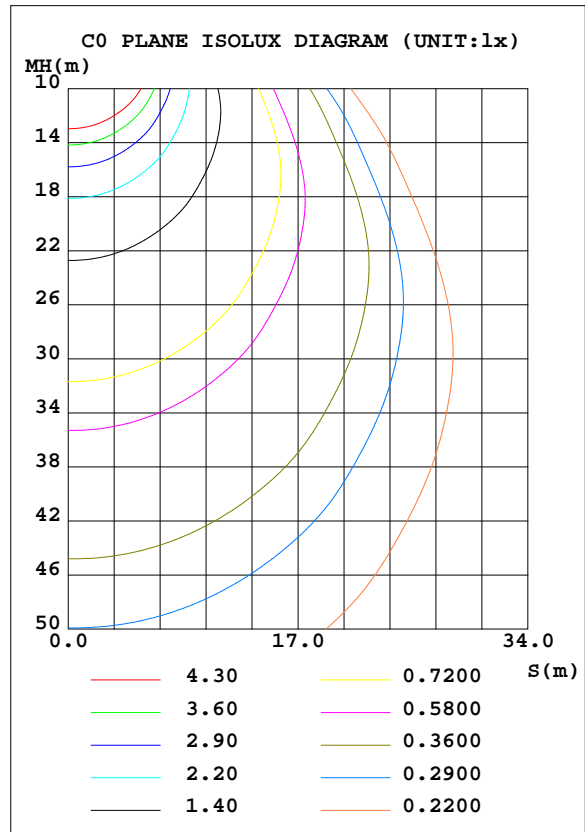
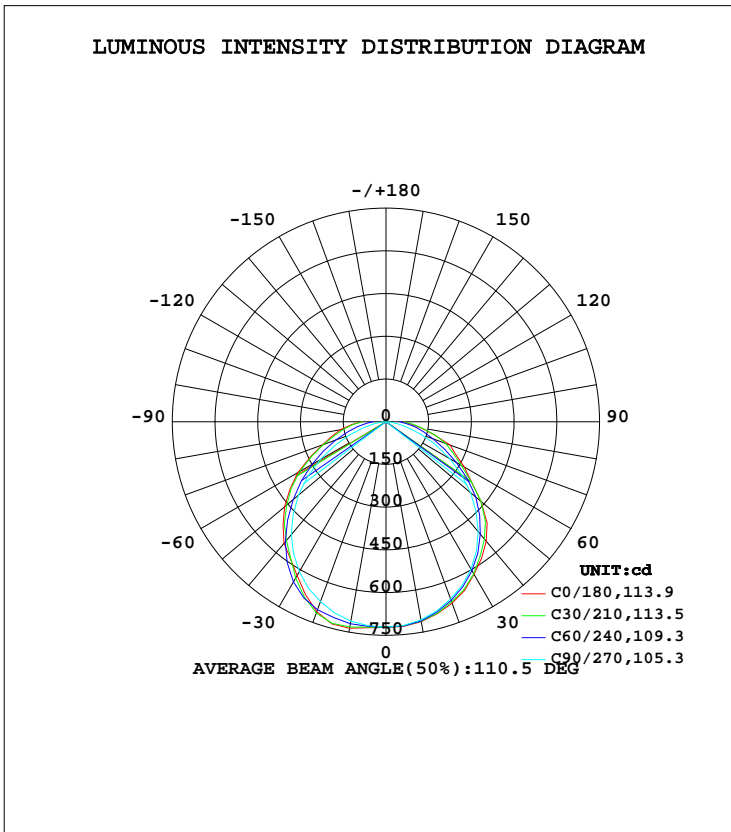


LUMINAIRE PHOTOMETRIC TEST REPORT

Test:U:220.1V I:0.0613A P:12.90W PF:0.9566 Freq:50.00Hz Lamp Flux:2133.3x1 lm		
NAME: LED TUBE	TYPE:LED	WEIGHT:N/A
SPEC.:N/A	DIM.:	SERIAL No.:N/A
MFR.: MY LUMENS TECH.CO.LTD	SUR.:	Shielding Angle:N/A

DATA OF LAMP		PHOTOMETRIC DATA			
MODEL	MY-T5124012232B	Imax(cd)	737.1	S/MH(C0/180)	1.28
NOMINAL POWER(W)	20	LOR(%)	100.0	S/MH(C90/270)	1.25
RATED VOLTAGE(V)	220	TOTAL FLUX(lm)	2133.3	η UP, DN(C0-180)	0.0,49.6
NOMINAL FLUX(lm)	2133.3	CIE CLASS	DIRECT	η UP, DN(C180-360)	0.0,50.4
LAMPS INSIDE	1	η up(%)	0.0	CIBSE SHR NOM	1.25
TEST VOLTAGE(V)	220	η down(%)	100.0	CIBSE SHR MAX	1.35



C Range: 0 - 360DEG
 C Interval: 5.0DEG
 Test Speed: HIGH
 Temperature:24.5DEG
 Operators:William
 Test Date:2017-12-15

γ Range: 0 - 90DEG
 γ Interval: 5.0DEG
 Test System:EVERFINE GO-R5000_V2 SYSTEM V2.0.352
 Humidity:65.7%
 Test Distance:26.000m [K=1.4470]
 Remarks:

ZONAL FLUX DIAGRAM

ZONAL FLUX DIAGRAM:

γ	C0	C45	C90	C135	C180	C225	C270	C315	γ	Φ zone	Φ total	%lum, lamp
10	712.7	713.2	706.4	720.2	736.0	726.6	711.3	711.4	0- 10	68.71	68.71	3.22,3.22
20	678.0	674.4	662.9	706.2	709.7	714.5	671.9	676.8	10- 20	199.4	268.1	12.6,12.6
30	618.4	613.2	597.5	635.5	623.8	643.5	608.0	619.4	20- 30	302.8	570.9	26.8,26.8
40	548.0	530.2	503.8	530.5	557.1	538.7	517.4	536.6	30- 40	362.6	933.4	43.8,43.8
50	435.1	430.8	388.5	430.8	465.4	439.8	401.5	435.8	40- 50	373.8	1307	61.3,61.3
60	316.6	300.2	258.5	326.4	358.0	335.5	267.5	304.5	50- 60	329.0	1636	76.7,76.7
70	240.3	204.3	132.4	210.3	238.5	215.9	137.2	207.6	60- 70	248.6	1885	88.4,88.4
80	126.4	123.2	41.11	127.8	163.1	132.6	41.75	125.3	70- 80	161.9	2047	95.9,95.9
90	62.51	64.54	0	70.05	87.41	74.79	0	65.37	80- 90	86.58	2133	100,100
100									90-100			
110									100-110			
120									110-120			
130									120-130			
140									130-140			
150									140-150			
160									150-160			
170									160-170			
180									170-180			
DEG	LUMINOUS INTENSITY:cd									UNIT:lm		

Conical surface Flux(90deg): 1122.4 lm

%lum = 52.6%
%lamp = 52.6%

Conical surface Flux(120deg): 1636.2 lm

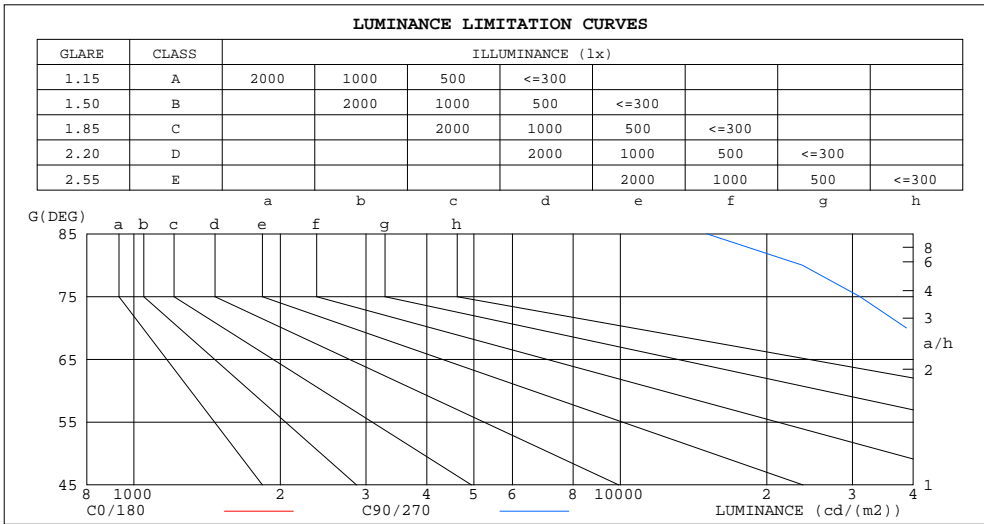
%lum = 76.7%
%lamp = 76.7%

C Range: 0 - 360DEG
C Interval: 5.0DEG
Test Speed: HIGH
Temperature:24.5DEG
Operators:William
Test Date:2017-12-15

γ Range: 0 - 90DEG
 γ Interval: 5.0DEG
Test System:EVERFINE GO-R5000_V2 SYSTEM V2.0.352
Humidity:65.7%
Test Distance:26.000m [K=1.4470]
Remarks:

LUMINANCE LIMITATION CURVES

Test:U:220.1V I:0.0613A P:12.90W PF:0.9566 Freq:50.00Hz Lamp Flux:2133.3x1 lm		
NAME: LED TUBE	TYPE:LED	WEIGHT:N/A
SPEC.:N/A	DIM.:	SERIAL No.:N/A
MFR.: MY LUMENS TECH.CO.LTD	SUR.:	Shielding Angle:N/A



LUMINANCE cd/(m2)		
G(DEG)	C0/180	C90/270
85	98872	15062
80	72770	23672
75	67280	31069
70	70269	38724
65	63698	45886
60	63322	51709
55	63746	56546
50	67692	60440
45	71117	63346

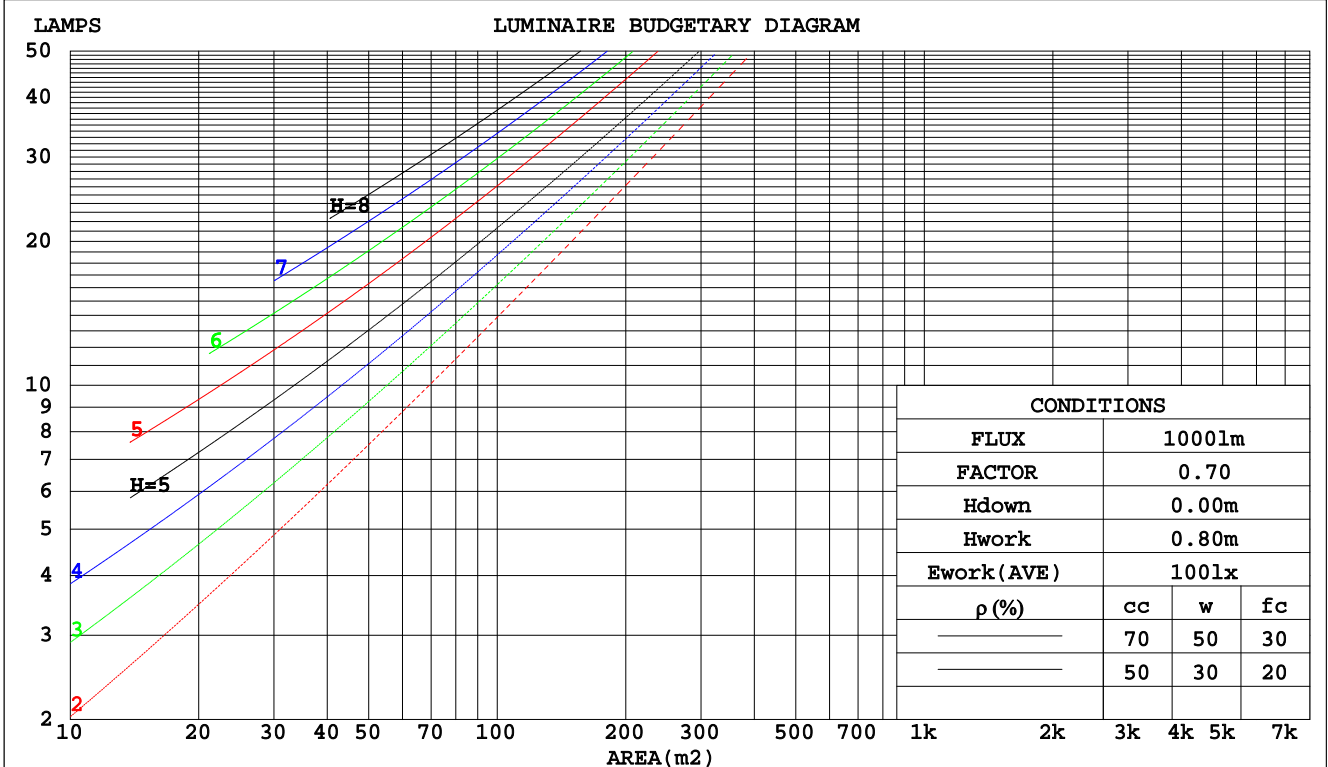
C Range: 0 - 360DEG
 C Interval: 5.0DEG
 Test Speed: HIGH
 Temperature:24.5DEG
 Operators:William
 Test Date:2017-12-15

γ Range: 0 - 90DEG
 γ Interval: 5.0DEG
 Test System:EVERFINE GO-R5000_V2 SYSTEM V2.0.352
 Humidity:65.7%
 Test Distance:26.000m [K=1.4470]
 Remarks:

CU AND LUMINAIRE BUDGETARY ESTIMATE DIAGRAM

Test:U:220.1V I:0.0613A P:12.90W PF:0.9566 Freq:50.00Hz Lamp Flux:2133.3x1 lm		
NAME: LED TUBE	TYPE:LED	WEIGHT:N/A
SPEC.:N/A	DIM.:	SERIAL No.:N/A
MFR.: MY LUMENS TECH.CO.LTD	SUR.:	Shielding Angle:N/A

pcc	80%			70%			50%			30%			10%			0
	50%	30%	10%	50%	30%	10%	50%	30%	10%	50%	30%	10%	50%	30%	10%	0
pw																
pfc																
RCR	RCR:Room Cavity Ratio															
	Coefficients of Utilization(CU)															
0.0	1.19	1.19	1.19	1.16	1.16	1.16	1.11	1.11	1.11	1.06	1.06	1.06	1.02	1.02	1.02	1.00
1.0	1.03	.98	.94	1.00	.96	.92	.96	.93	.89	.92	.89	.87	.88	.86	.84	.82
2.0	.89	.82	.76	.87	.81	.75	.84	.78	.73	.80	.76	.72	.77	.73	.70	.68
3.0	.78	.70	.63	.77	.69	.63	.74	.67	.61	.71	.65	.60	.68	.63	.59	.57
4.0	.69	.60	.53	.68	.60	.53	.65	.58	.52	.63	.57	.52	.61	.55	.51	.49
5.0	.62	.53	.46	.61	.52	.46	.59	.51	.45	.57	.50	.45	.55	.49	.44	.42
6.0	.56	.47	.40	.55	.46	.40	.53	.45	.40	.51	.44	.39	.50	.44	.39	.37
7.0	.51	.42	.35	.50	.41	.35	.48	.41	.35	.47	.40	.35	.45	.39	.34	.32
8.0	.46	.38	.32	.45	.37	.32	.44	.37	.31	.43	.36	.31	.42	.35	.31	.29
9.0	.42	.34	.28	.42	.34	.28	.41	.33	.28	.39	.33	.28	.38	.32	.28	.26
10.0	.39	.31	.26	.39	.31	.26	.38	.30	.26	.37	.30	.25	.36	.30	.25	.24



C Range: 0 - 360DEG
 C Interval: 5.0DEG
 Test Speed: HIGH
 Temperature:24.5DEG
 Operators:William
 Test Date:2017-12-15

γ Range: 0 - 90DEG
 γ Interval: 5.0DEG
 Test System:EVERFINE GO-R5000_V2 SYSTEM V2.0.352
 Humidity:65.7%
 Test Distance:26.000m [K=1.4470]
 Remarks:

WEC AND CCEC

Test:U:220.1V I:0.0613A P:12.90W PF:0.9566 Freq:50.00Hz Lamp Flux:2133.3x1 lm									
NAME: LED TUBE					TYPE:LED			WEIGHT:N/A	
SPEC.:N/A					DIM.:			SERIAL No.:N/A	
MFR.: MY LUMENS TECH.CO.LTD					SUR.:			Shielding Angle:N/A	

ρcc	80%			70%			50%			30%			10%			0
ρw	50%	30%	10%	50%	30%	10%	50%	30%	10%	50%	30%	10%	50%	30%	10%	0
ρfc	20%			20%			20%			20%			20%			0
RCR	RCR:Room Cavity Ratio						Wall Exitance Coefficients(WEC)									
0.0																
1.0	.333	.189	.060	.326	.186	.059	.313	.179	.057	.300	.173	.056	.289	.167	.054	
2.0	.304	.166	.051	.297	.164	.050	.285	.159	.049	.275	.154	.048	.264	.150	.047	
3.0	.277	.147	.044	.271	.145	.044	.261	.141	.043	.251	.138	.042	.242	.134	.042	
4.0	.254	.132	.039	.249	.130	.038	.240	.127	.038	.231	.124	.037	.223	.121	.037	
5.0	.234	.119	.034	.229	.118	.034	.221	.115	.034	.213	.113	.033	.206	.110	.033	
6.0	.216	.108	.031	.212	.107	.031	.205	.105	.031	.198	.103	.030	.192	.101	.030	
7.0	.201	.099	.028	.197	.098	.028	.191	.096	.028	.185	.095	.028	.179	.093	.027	
8.0	.187	.091	.026	.184	.091	.026	.178	.089	.025	.173	.087	.025	.168	.086	.025	
9.0	.175	.085	.024	.172	.084	.024	.167	.083	.023	.162	.081	.023	.158	.080	.023	
10.0	.164	.079	.022	.162	.078	.022	.157	.077	.022	.153	.076	.022	.149	.075	.021	

ρcc	80%			70%			50%			30%			10%			0
ρw	50%	30%	10%	50%	30%	10%	50%	30%	10%	50%	30%	10%	50%	30%	10%	0
ρfc	20%			20%			20%			20%			20%			0
RCR	RCR:Room Cavity Ratio						Ceiling Cavity Exitance Coefficients(CCEC)									
0.0	.190	.190	.190	.163	.163	.163	.111	.111	.111	.064	.064	.064	.020	.020	.020	
1.0	.182	.156	.133	.156	.134	.114	.106	.092	.079	.061	.053	.046	.020	.017	.015	
2.0	.174	.132	.097	.149	.114	.083	.102	.079	.058	.059	.046	.034	.019	.015	.011	
3.0	.166	.114	.073	.142	.099	.064	.098	.069	.045	.056	.040	.026	.018	.013	.009	
4.0	.158	.101	.058	.136	.087	.050	.093	.061	.035	.054	.036	.021	.017	.012	.007	
5.0	.150	.091	.047	.129	.078	.041	.089	.055	.029	.052	.032	.017	.017	.011	.006	
6.0	.143	.082	.039	.123	.071	.034	.085	.050	.024	.049	.029	.014	.016	.010	.005	
7.0	.136	.075	.033	.117	.065	.029	.081	.046	.020	.047	.027	.012	.015	.009	.004	
8.0	.130	.070	.029	.111	.060	.025	.077	.042	.018	.045	.025	.011	.015	.008	.003	
9.0	.123	.065	.025	.106	.056	.022	.074	.039	.016	.043	.023	.009	.014	.008	.003	
10.0	.118	.060	.022	.101	.052	.019	.070	.037	.014	.041	.022	.008	.013	.007	.003	

C Range: 0 - 360DEG
 C Interval: 5.0DEG
 Test Speed: HIGH
 Temperature:24.5DEG
 Operators:William
 Test Date:2017-12-15

γ Range: 0 - 90DEG
 γ Interval: 5.0DEG
 Test System:EVERFINE GO-R5000_V2 SYSTEM V2.0.352
 Humidity:65.7%
 Test Distance:26.000m [K=1.4470]
 Remarks:

UGR(Unified Glare Rating) Table

Test:U:220.1V I:0.0613A P:12.90W PF:0.9566 Freq:50.00Hz Lamp Flux:2133.3x1 lm											
NAME: LED TUBE					TYPE:LED			WEIGHT:N/A			
SPEC.:N/A					DIM.:			SERIAL No.:N/A			
MFR.: MY LUMENS TECH.CO.LTD					SUR.:			Shielding Angle:N/A			
ceiling/cavity	0.7	0.7	0.5	0.5	0.3	0.7	0.7	0.5	0.5	0.3	
walls	0.5	0.3	0.5	0.3	0.3	0.5	0.3	0.5	0.3	0.3	
working plane	0.2	0.2	0.2	0.2	0.2	0.2	0.2	0.2	0.2	0.2	
Room dimensions	Viewed crosswise					Viewed endwise					
x = 2H y = 2H	27.2	28.7	27.5	28.9	29.2	26.4	27.9	26.7	28.1	28.3	
3H	29.2	30.6	29.5	30.9	31.1	27.4	28.8	27.7	29.1	29.3	
4H	30.0	31.4	30.3	31.6	31.9	27.7	29.1	28.0	29.3	29.6	
6H	30.7	32.0	31.1	32.3	32.6	27.9	29.2	28.2	29.4	29.7	
8H	31.0	32.3	31.4	32.5	32.8	27.9	29.1	28.2	29.4	29.7	
12H	32.8	34.0	33.1	34.3	34.6	27.9	29.1	28.2	29.4	29.7	
4H	2H	27.8	29.1	28.1	29.4	29.6	27.1	28.5	27.4	28.7	29.0
3H	30.0	31.2	30.4	31.5	31.8	28.4	29.6	28.8	29.9	30.2	
4H	31.0	32.1	31.3	32.4	32.7	28.9	30.0	29.3	30.4	30.7	
6H	31.9	32.8	32.3	33.2	33.6	29.3	30.3	29.7	30.6	31.0	
8H	32.2	33.2	32.7	33.5	33.9	29.3	30.2	29.7	30.6	31.0	
12H	34.8	35.6	35.2	36.0	36.4	30.3	31.1	30.7	31.5	31.9	
8H	4H	31.3	32.2	31.7	32.6	33.0	29.6	30.5	30.0	30.9	31.3
6H	32.4	33.2	32.9	33.6	34.0	30.2	31.0	30.7	31.4	31.9	
8H	33.0	33.6	33.4	34.1	34.5	30.5	31.2	30.9	31.6	32.0	
12H	36.7	37.3	37.1	37.7	38.2	34.1	34.7	34.6	35.1	35.6	
12H	4H	31.3	32.2	31.7	32.5	32.9	29.7	30.6	30.2	31.0	31.4
6H	32.5	33.2	33.0	33.6	34.1	30.5	31.2	31.0	31.6	32.1	
8H	33.2	33.8	33.6	34.2	34.7	30.9	31.5	31.4	31.9	32.4	
Variations with the observer position at spacings:											
S = 1.0H	+ 0.1 / - 0.1					+ 0.1 / - 0.1					
1.5H	+ 0.2 / - 0.2					+ 0.2 / - 0.3					
2.0H	+ 0.1 / - 0.3					+ 0.2 / - 0.3					

CIE Pub.117 Corrected 2133 lm Total Lamp Luminous Flux.(8log(F/F0) = 2.6)

C Range: 0 - 360DEG
 C Interval: 5.0DEG
 Test Speed: HIGH
 Temperature:24.5DEG
 Operators:William
 Test Date:2017-12-15

γ Range: 0 - 90DEG
 γ Interval: 5.0DEG
 Test System:EVERFINE GO-R5000_V2 SYSTEM V2.0.352
 Humidity:65.7%
 Test Distance:26.000m [K=1.4470]
 Remarks:

UTILIZATION FACTORS TABLE

Test:U:220.1V I:0.0613A P:12.90W PF:0.9566 Freq:50.00Hz Lamp Flux:2133.3x1 lm		
NAME: LED TUBE	TYPE:LED	WEIGHT:N/A
SPEC.:N/A	DIM.:	SERIAL No.:N/A
MFR.: MY LUMENS TECH.CO.LTD	SUR.:	Shielding Angle:N/A

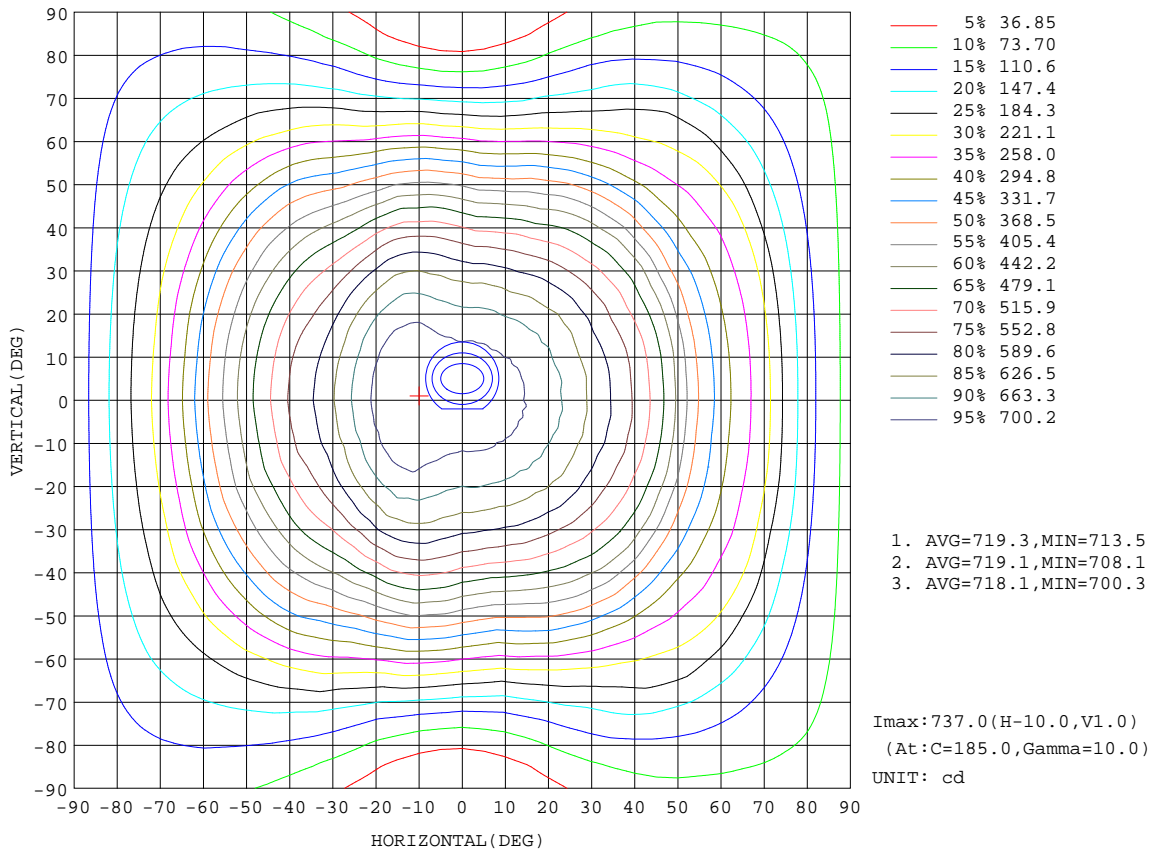
REFLECTANCE										
Ceiling	0.8	0.8	0.8	0.7	0.7	0.7	0.5	0.5	0.5	0
Walls	0.7	0.5	0.3	0.7	0.5	0.3	0.7	0.5	0.3	0
Working plane	0.2	0.2	0.2	0.2	0.2	0.2	0.2	0.2	0.2	0
ROOM INDEX	UTILIZATION FACTORS(PERCENT) $k(RI) \times RCR = 5$									
k = 0.60	57	45	38	56	45	38	55	45	38	32
0.80	67	55	48	66	55	48	64	54	47	40
1.00	75	64	57	74	63	56	72	65	56	48
1.25	82	72	64	81	71	64	78	69	63	56
1.50	87	77	70	85	76	69	82	74	68	61
2.00	94	85	78	92	84	78	89	82	76	68
2.50	98	90	83	96	88	83	92	86	81	72
3.00	101	94	88	99	92	87	95	89	85	76
4.00	105	99	94	103	97	93	99	94	90	81
5.00	108	103	98	105	101	97	101	97	94	84
ROOM INDEX	UF(total)									Direct
According to DIN EN 13032-2 2004			Suspended				SHRNOM = 1.25			

C Range: 0 - 360DEG
 C Interval: 5.0DEG
 Test Speed: HIGH
 Temperature:24.5DEG
 Operators:William
 Test Date:2017-12-15

γ Range: 0 - 90DEG
 γ Interval: 5.0DEG
 Test System:EVERFINE GO-R5000_V2 SYSTEM V2.0.352
 Humidity:65.7%
 Test Distance:26.000m [K=1.4470]
 Remarks:

ISOCANDELA DIAGRAM

Test:U:220.1V I:0.0613A P:12.90W PF:0.9566 Freq:50.00Hz Lamp Flux:2133.3x1 lm		
NAME: LED TUBE	TYPE:LED	WEIGHT:N/A
SPEC.:N/A	DIM.:	SERIAL No.:N/A
MFR.: MY LUMENS TECH.CO.LTD	SUR.:	Shielding Angle:N/A



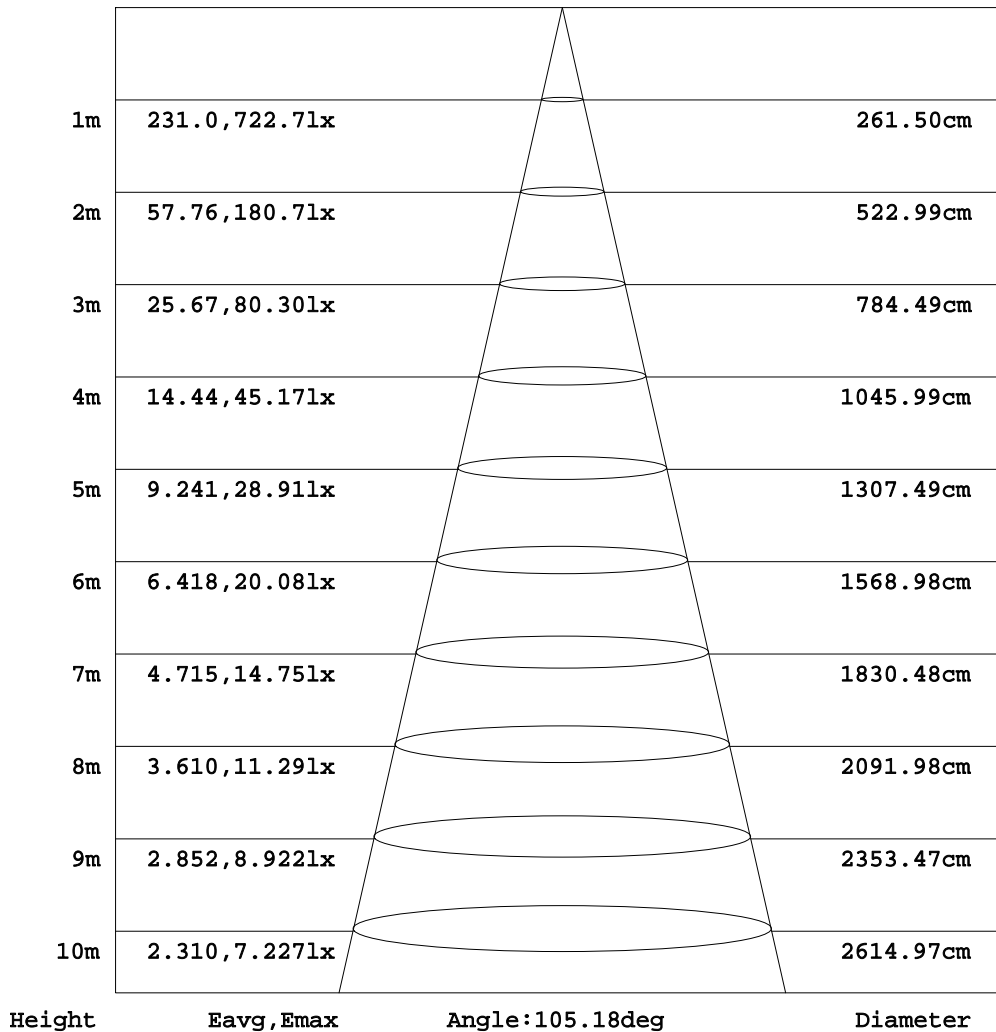
C Range: 0 - 360DEG
 C Interval: 5.0DEG
 Test Speed: HIGH
 Temperature: 24.5DEG
 Operators: William
 Test Date: 2017-12-15

γ Range: 0 - 90DEG
 γ Interval: 5.0DEG
 Test System: EVERFINE GO-R5000_V2 SYSTEM V2.0.352
 Humidity: 65.7%
 Test Distance: 26.000m [K=1.4470]
 Remarks:

AAI Figure

Test:U:220.1V I:0.0613A P:12.90W PF:0.9566 Freq:50.00Hz Lamp Flux:2133.3x1 lm		
NAME: LED TUBE	TYPE:LED	WEIGHT:N/A
SPEC.:N/A	DIM.:	SERIAL No.:N/A
MFR.: MY LUMENS TECH.CO.LTD	SUR.:	Shielding Angle:N/A

Flux out:1480 lm



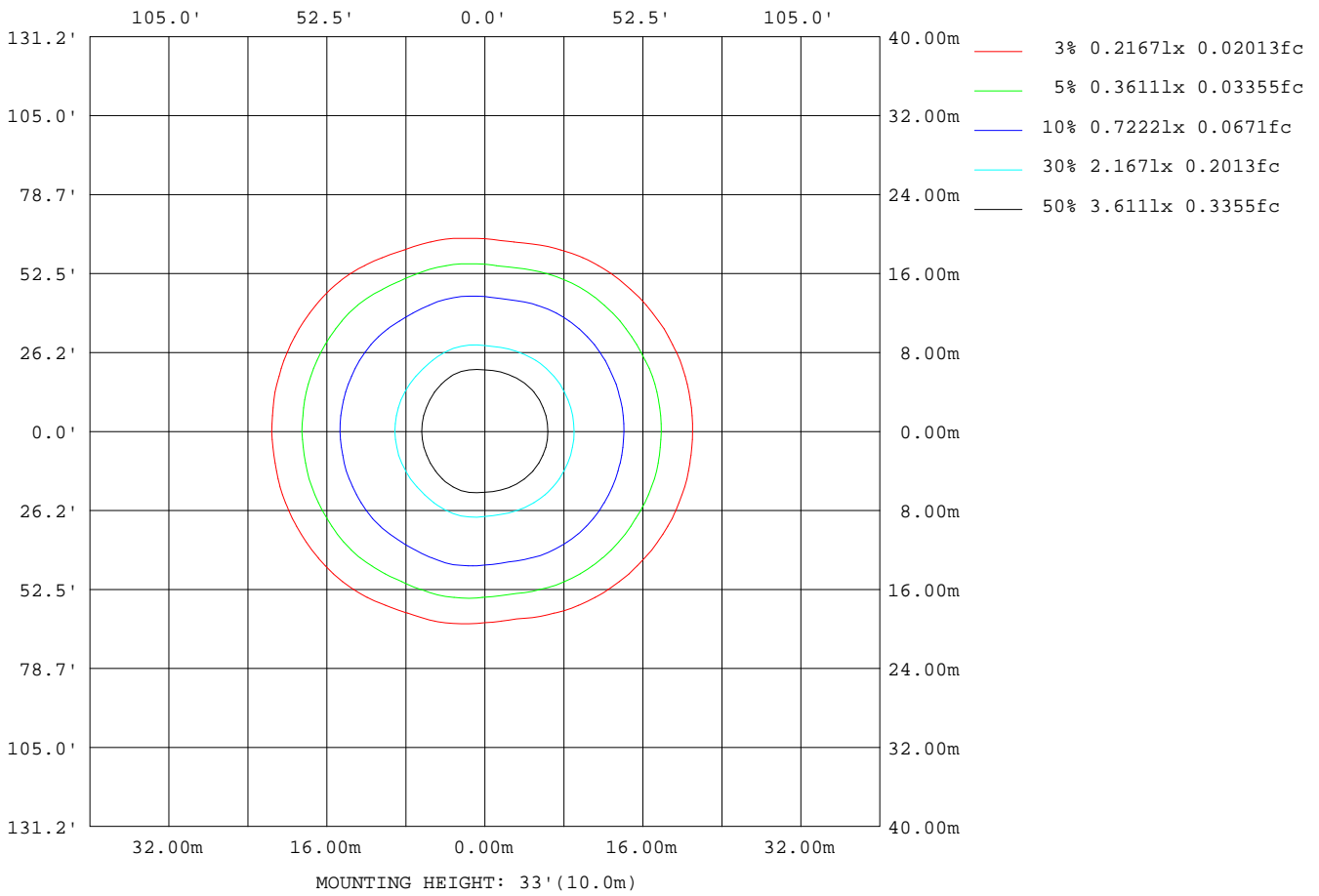
Note:The Curves indicate the illuminated area and the average illumination when the luminaire is at different distance.

C Range: 0 - 360DEG
 C Interval: 5.0DEG
 Test Speed: HIGH
 Temperature:24.5DEG
 Operators:William
 Test Date:2017-12-15

γ Range: 0 - 90DEG
 γ Interval: 5.0DEG
 Test System:EVERFINE GO-R5000_V2 SYSTEM V2.0.352
 Humidity:65.7%
 Test Distance:26.000m [K=1.4470]
 Remarks:

ISOLUX DIAGRAM

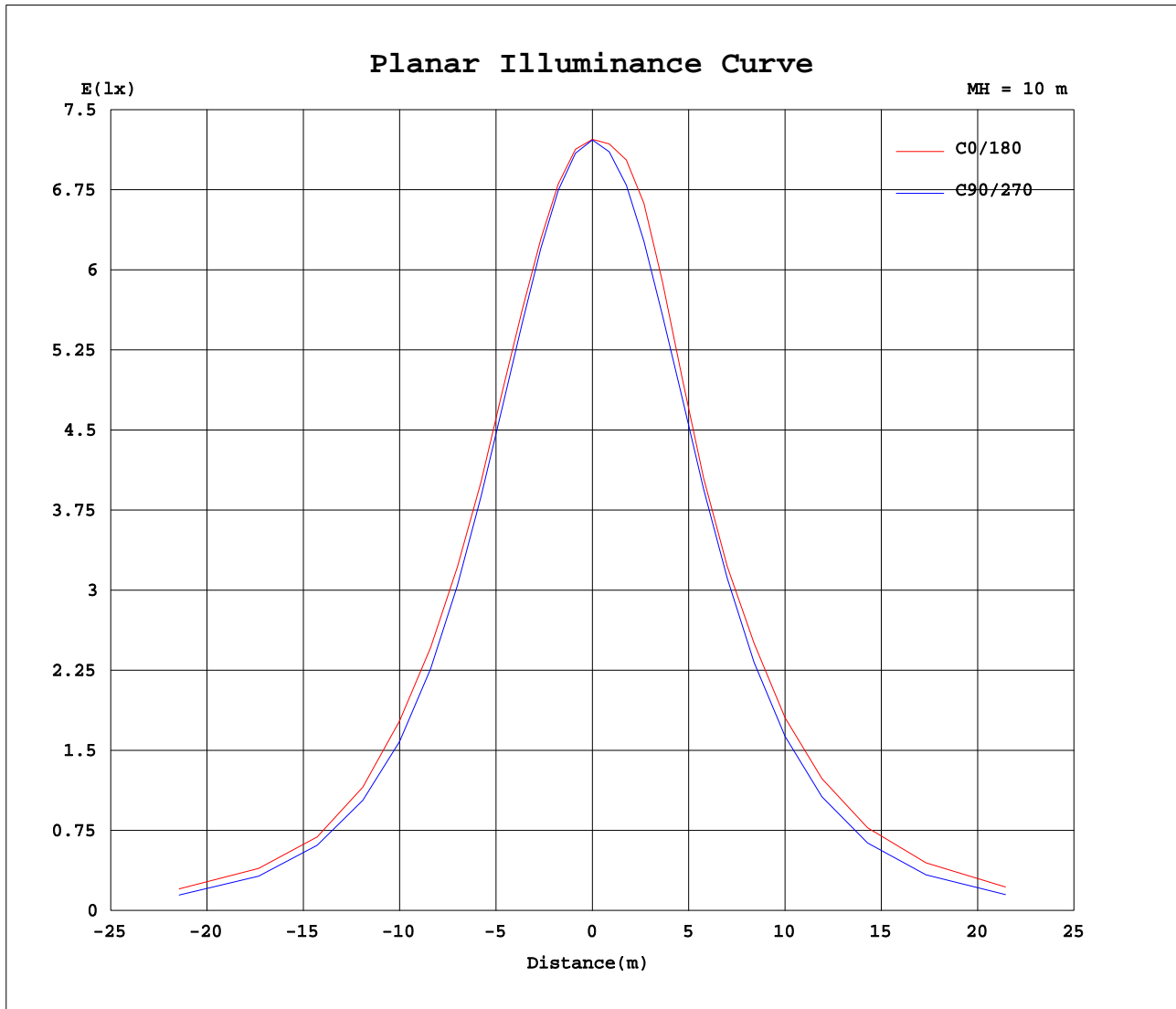
Test:U:220.1V I:0.0613A P:12.90W PF:0.9566 Freq:50.00Hz Lamp Flux:2133.3x1 lm		
NAME: LED TUBE	TYPE:LED	WEIGHT:N/A
SPEC.:N/A	DIM.:	SERIAL No.:N/A
MFR.: MY LUMENS TECH.CO.LTD	SUR.:	Shielding Angle:N/A



C Range: 0 - 360DEG
 C Interval: 5.0DEG
 Test Speed: HIGH
 Temperature:24.5DEG
 Operators:William
 Test Date:2017-12-15

γ Range: 0 - 90DEG
 γ Interval: 5.0DEG
 Test System:EVERFINE GO-R5000_V2 SYSTEM V2.0.352
 Humidity:65.7%
 Test Distance:26.000m [K=1.4470]
 Remarks:

Planar Illuminance Curve



C Range: 0 - 360DEG
C Interval: 5.0DEG
Test Speed: HIGH
Temperature: 24.5DEG
Operators: William
Test Date: 2017-12-15

γ Range: 0 - 90DEG
 γ Interval: 5.0DEG
Test System: EVERFINE GO-R5000_V2 SYSTEM V2.0.352
Humidity: 65.7%
Test Distance: 26.000m [K=1.4470]
Remarks:

LUMINOUS DISTRIBUTION INTENSITY DATA

Test:U:220.1V I:0.0613A P:12.90W PF:0.9566 Freq:50.00Hz Lamp Flux:2133.3x1 lm		
NAME: LED TUBE	TYPE:LED	WEIGHT:N/A
SPEC.:N/A	DIM.:	SERIAL No.:N/A
MFR.: MY LUMENS TECH.CO.LTD	SUR.:	Shielding Angle:N/A

Table--1

UNIT: cd

C(DEG) γ (DEG)	0	5	10	15	20	25	30	35	40	45	50	55	60	65	70	75	80	85	90
0	722	722	722	722	722	723	722	722	722	722	722	722	722	722	722	722	722	721	722
5	721	722	721	721	721	721	719	721	719	721	720	718	719	717	719	719	718	717	717
10	713	713	713	712	712	712	712	712	711	713	709	710	711	709	709	708	708	707	706
15	698	700	698	699	697	698	697	697	695	694	692	694	692	692	691	691	690	689	688
20	678	679	677	677	675	675	674	675	672	674	669	670	668	668	666	666	667	665	663
25	654	656	653	655	651	651	649	649	646	646	641	641	639	638	634	634	634	635	634
30	618	619	617	619	616	617	616	618	614	613	607	606	604	602	598	597	595	597	597
35	586	587	584	585	579	579	577	577	575	574	569	566	562	560	554	552	550	552	554
40	548	549	546	547	542	541	538	537	533	530	524	520	515	512	506	501	497	500	504
45	503	502	501	500	497	497	494	492	487	484	476	472	465	458	452	445	440	443	448
50	435	435	435	437	435	438	436	437	433	431	423	419	412	404	393	385	379	382	389
55	366	362	364	365	364	365	365	367	365	366	360	356	350	345	334	325	314	318	324
60	317	314	316	315	311	309	304	303	302	300	295	291	284	279	269	263	253	254	259
65	269	269	268	268	265	265	260	258	250	246	239	234	226	218	208	199	190	192	194
70	240	241	237	238	234	229	224	219	211	204	194	187	176	168	156	146	134	133	132
75	174	176	173	176	175	178	177	180	176	172	163	150	136	125	112	100.0	89.1	83.9	80.4
80	126	127	127	127	128	129	128	128	125	123	119	113	103	90.9	77.4	63.5	52.2	44.8	41.1
85	86.2	86.2	87.1	87.8	89.3	90.9	92.8	93.5	92.6	89.2	84.8	78.9	71.3	59.9	48.3	34.9	24.7	16.5	13.1
90	62.5	62.2	62.7	62.6	63.1	63.0	63.8	63.9	65.2	64.5	60.9	54.9	48.1	38.5	27.1	16.7	8.34	2.62	0.00

C Range: 0 - 360DEG C Interval: 5.0DEG Test Speed: HIGH Temperature: 24.5DEG Operators: William Test Date: 2017-12-15	γ Range: 0 - 90DEG γ Interval: 5.0DEG Test System: EVERFINE GO-R5000_V2 SYSTEM V2.0.352 Humidity: 65.7% Test Distance: 26.000m [K=1.4470] Remarks:
--	---

LUMINOUS DISTRIBUTION INTENSITY DATA

Test:U:220.1V I:0.0613A P:12.90W PF:0.9566 Freq:50.00Hz Lamp Flux:2133.3x1 lm		
NAME: LED TUBE	TYPE:LED	WEIGHT:N/A
SPEC.:N/A	DIM.:	SERIAL No.:N/A
MFR.: MY LUMENS TECH.CO.LTD	SUR.:	Shielding Angle:N/A

Table--2

UNIT: cd

C(DEG) \ γ (DEG)	95	100	105	110	115	120	125	130	135	140	145	150	155	160	165	170	175	180	185
0	721	722	722	722	722	722	722	721	722	722	722	722	722	722	722	723	723	722	722
5	717	718	717	719	718	718	720	720	721	721	722	723	724	723	725	726	726	726	726
10	707	708	708	709	711	713	716	719	720	725	726	730	731	732	735	736	737	736	737
15	691	692	695	698	702	705	711	716	720	726	725	731	730	731	732	734	734	735	735
20	666	669	676	681	687	693	701	703	706	709	708	709	709	706	709	707	709	710	709
25	639	644	652	658	665	668	677	675	677	676	674	673	669	667	669	668	668	670	670
30	604	611	621	627	634	636	642	636	635	632	630	628	624	620	623	621	621	624	624
35	563	572	583	588	592	593	593	586	586	580	579	578	576	576	581	582	583	586	585
40	515	525	534	538	542	537	537	531	531	529	533	537	540	544	551	552	554	557	556
45	462	470	479	482	482	476	478	475	479	486	494	498	499	501	506	505	507	511	510
50	401	407	419	418	415	414	420	422	431	437	443	446	449	454	460	460	461	465	466
55	335	343	352	350	353	354	361	367	380	387	393	396	398	401	406	405	407	411	411
60	268	275	283	284	288	293	304	313	326	334	338	340	343	348	352	352	354	358	356
65	200	209	216	217	224	236	250	259	267	272	277	280	284	286	289	287	289	293	292
70	139	145	152	158	170	182	197	203	210	216	223	226	230	230	234	232	235	238	237
75	83.9	88.9	99.1	108	123	137	150	157	166	172	177	180	185	188	191	191	193	196	196
80	42.7	48.0	58.1	69.8	84.6	98.9	111	120	128	134	140	145	149	153	156	158	161	163	164
85	13.9	19.9	28.3	40.3	54.2	66.9	78.2	86.7	94.6	101	107	113	116	118	119	119	119	121	122
90	0.56	5.57	11.7	21.2	31.4	43.4	52.7	62.4	70.0	76.1	77.9	80.2	81.1	83.8	84.3	85.6	85.6	87.4	87.3

C Range: 0 - 360DEG γ Range: 0 - 90DEG
 C Interval: 5.0DEG γ Interval: 5.0DEG
 Test Speed: HIGH Test System: EVERFINE GO-R5000_V2 SYSTEM V2.0.352
 Temperature: 24.5DEG Humidity: 65.7%
 Operators: William Test Distance: 26.000m [K=1.4470]
 Test Date: 2017-12-15 Remarks:

LUMINOUS DISTRIBUTION INTENSITY DATA

Test:U:220.1V I:0.0613A P:12.90W PF:0.9566 Freq:50.00Hz Lamp Flux:2133.3x1 lm		
NAME: LED TUBE	TYPE:LED	WEIGHT:N/A
SPEC.:N/A	DIM.:	SERIAL No.:N/A
MFR.: MY LUMENS TECH.CO.LTD	SUR.:	Shielding Angle:N/A

Table--3

UNIT: cd

C(DEG) \ y (DEG)	190	195	200	205	210	215	220	225	230	235	240	245	250	255	260	265	270	275	280
0	722	722	722	723	722	722	722	722	722	722	722	722	722	722	722	721	722	721	722
5	726	725	725	726	724	725	723	724	722	722	721	720	720	721	720	720	719	720	721
10	736	735	734	734	732	730	727	727	722	721	720	717	714	713	713	712	711	712	713
15	735	736	734	734	732	732	728	727	720	718	712	710	704	701	699	696	696	696	697
20	710	711	712	713	715	715	714	714	709	707	703	696	689	683	680	675	672	672	674
25	670	672	673	675	679	681	684	685	685	684	683	676	668	659	654	647	645	643	645
30	624	626	627	628	634	636	640	643	645	647	650	645	639	628	621	612	608	605	608
35	585	584	583	583	584	587	591	593	597	600	605	603	600	591	584	574	566	561	563
40	556	555	552	547	544	540	539	539	542	544	550	553	549	543	537	527	517	509	511
45	510	510	509	507	505	502	496	489	484	484	489	492	495	486	483	473	461	453	455
50	465	464	461	458	455	451	447	440	432	427	426	424	430	424	418	410	401	391	394
55	411	410	409	407	406	401	397	388	378	366	363	359	359	356	352	341	335	326	327
60	357	356	355	351	350	346	343	336	323	309	300	293	292	287	282	273	268	260	263
65	294	293	292	291	289	285	281	275	267	255	242	229	222	219	213	203	199	196	197
70	239	236	236	234	234	229	224	216	209	200	188	173	162	153	148	141	137	136	141
75	196	195	193	190	186	182	179	172	163	153	141	125	112	100	92.0	84.5	83.1	84.9	92.5
80	161	160	158	155	151	146	140	133	125	115	103	87.0	72.2	59.1	49.3	43.0	41.8	45.0	53.5
85	123	123	122	121	117	113	106	99.4	90.5	81.6	69.4	56.6	41.7	29.6	20.0	14.5	12.6	16.8	24.3
90	87.2	87.2	86.2	85.0	83.4	82.3	80.0	74.8	65.7	56.0	45.6	33.9	22.4	13.0	5.96	1.59	0.00	2.38	7.55

C Range: 0 - 360DEG
 C Interval: 5.0DEG
 Test Speed: HIGH
 Temperature:24.5DEG
 Operators:William
 Test Date:2017-12-15

y Range: 0 - 90DEG
 y Interval: 5.0DEG
 Test System:EVERFINE GO-R5000_V2 SYSTEM V2.0.352
 Humidity:65.7%
 Test Distance:26.000m [K=1.4470]
 Remarks:

LUMINOUS DISTRIBUTION INTENSITY DATA

Test:U:220.1V I:0.0613A P:12.90W PF:0.9566 Freq:50.00Hz Lamp Flux:2133.3x1 lm		
NAME: LED TUBE	TYPE:LED	WEIGHT:N/A
SPEC.:N/A	DIM.:	SERIAL No.:N/A
MFR.: MY LUMENS TECH.CO.LTD	SUR.:	Shielding Angle:N/A

Table--4

UNIT: cd

C(DEG) γ (DEG)	285	290	295	300	305	310	315	320	325	330	335	340	345	350	355				
0	722	722	722	722	722	721	722	722	722	722	722	722	722	723	723				
5	720	721	721	719	722	720	721	721	721	722	722	720	722	721	722				
10	712	711	711	712	712	712	711	716	712	715	714	712	713	714	713				
15	696	697	697	695	697	697	697	699	698	700	700	699	700	699	699				
20	675	675	673	674	676	677	677	679	676	679	677	677	679	679	677				
25	645	645	643	646	649	649	650	654	652	656	654	653	655	656	653				
30	607	608	608	612	616	617	619	623	622	623	620	618	619	621	619				
35	563	566	567	572	576	578	581	583	582	584	581	584	586	587	586				
40	514	518	519	524	531	534	537	540	542	545	543	546	549	549	547				
45	459	464	466	476	483	487	490	496	496	500	498	501	504	503	502				
50	397	406	412	423	429	434	436	441	441	444	439	441	440	441	435				
55	334	347	352	361	365	369	371	374	370	371	367	369	367	367	366				
60	269	279	286	294	299	303	305	308	307	309	310	316	317	317	317				
65	205	215	224	233	240	247	250	256	260	265	266	270	270	270	270				
70	148	162	171	183	191	201	208	216	221	227	231	236	239	241	241				
75	102	116	128	140	154	167	175	181	181	182	180	180	177	178	176				
80	64.4	79.2	92.2	106	116	122	125	129	129	131	130	131	130	129	128				
85	35.5	48.6	60.7	72.4	80.8	86.0	90.7	94.0	95.1	94.7	93.0	91.0	89.5	87.9	87.4				
90	16.7	26.7	38.7	47.6	55.6	61.1	65.4	65.4	65.4	64.7	64.2	63.9	63.8	63.3	63.2				

C Range: 0 - 360DEG
C Interval: 5.0DEG
Test Speed: HIGH
Temperature:24.5DEG
Operators:William
Test Date:2017-12-15

γ Range: 0 - 90DEG
γ Interval: 5.0DEG
Test System:EVERFINE GO-R5000_V2 SYSTEM V2.0.352
Humidity:65.7%
Test Distance:26.000m [K=1.4470]
Remarks: