

MY LUMENS TECH LIMITED

Leading & Innovative Indoor Lighting
Solution Provider
with Indirect LED Lighting Technology



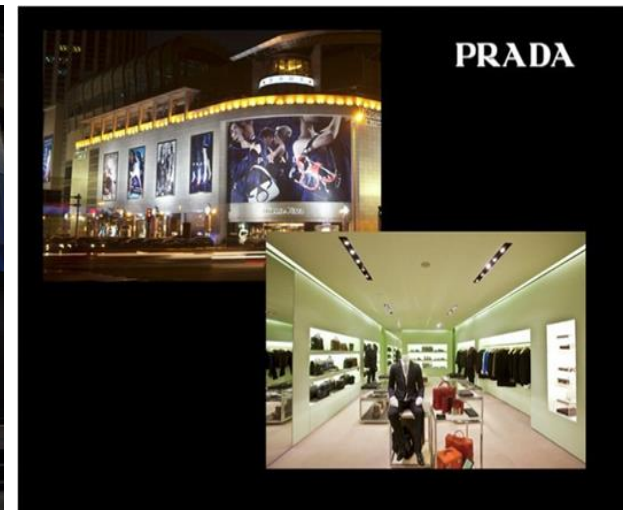
All rights reserved by MY LUMENS®

ABOUT US



MY LUMENS is the leading & innovative indoor LED lighting solutions provider for healthy and high efficiency led lighting, applications mainly focus on school lighting, hospital lighting, high-end office lighting market with Japanese leading technology (Furukawa material MCPET).

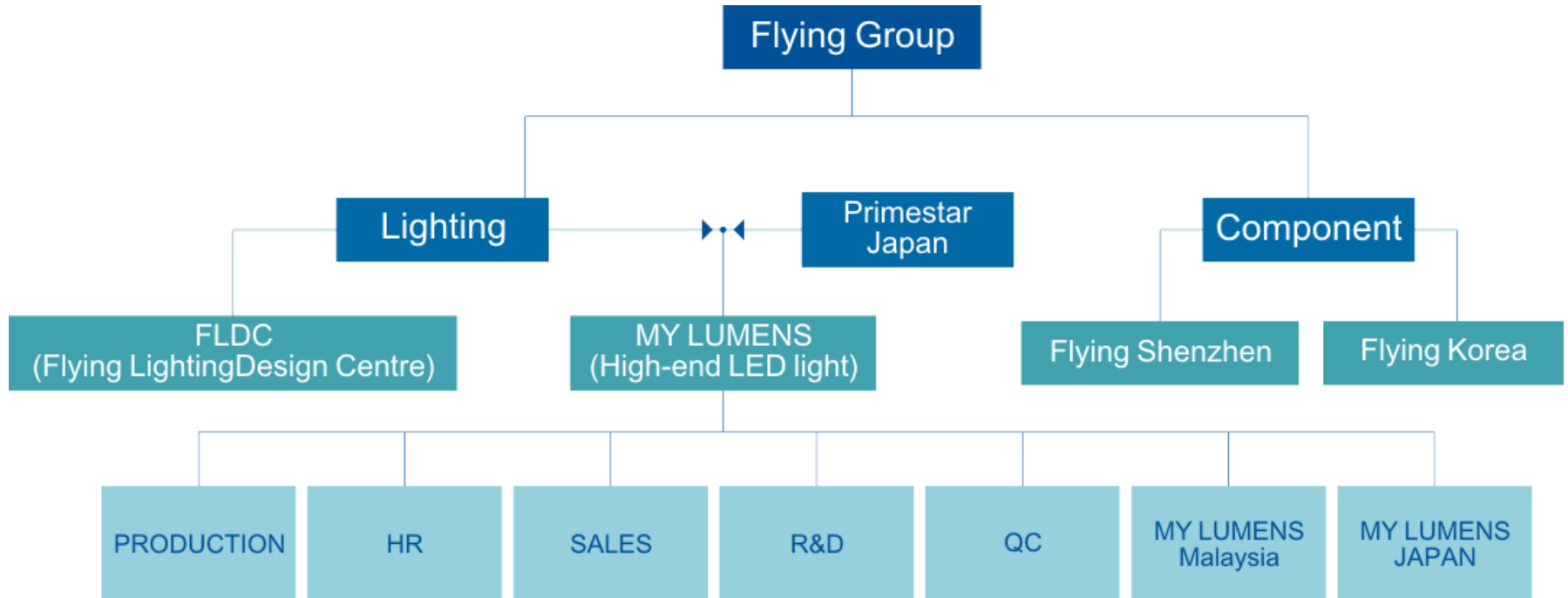
Our main products are T8 led tubes, baselight ,downlight, FPL, linear light, and back-lit panel light, troffer. now were widely used at Louis Vuitton ,Prada, Gucci, TBS, Kubota, Mitsubishi, Honda, ASE Taiwan, CLP HK etc., such kinds of famous companies all over the world.





2015	January	Released 180lm/W T8 LED Tube with MCPET Technology
	March	Be the supplier for Japan TBS office (Tokyo Broadcasting System Television)
	April	Released 140lm/W FPL Tube
	October	Released Baselight lamp for Japan client
2014	March	Released 160lm/W T8 LED Tube with MCPET Technology
	April	Released CRI 95 LED Tube with MCPET Technology
	July	Released the special yellow Tube (wavelength is more than 500nm)
	August	Released indirect LED troffer for LOUIS VUITTON Hongkong Group
	September	Be the partner with ASE Taiwan
	October	Be the supplier for CLP Hongkong Group
2011	March	MY LUMENS Technology Founded
2010 – 2013		Authorized distributor for Furukawa MCPET Join the Reference Design for Philip Lumileds, Cree, LG, Solution Supplier for Osram, Philip, Konka, TCP USA LED Lighting
2009	March	LED Lighting Business Unit Established
2007	October	LED Power Business Established
2006	June	Flying Tech Company Established





PRODUCTS



We are focus on high-end LED product with indirect LED lighting technology and competitive advantages .

Main products: LED Tube, LED FPL Tube, LED Base light, LED Down light ,LED Linear light, LED Back-lit panel light

- High efficiency (140lm/W-180lm/W)
- Uniform lighting without glare and darkness
- No-flicker LED tube light
- Less blue light
- High CRI>95Ra LED tube
- New technology MCPET inside for indirect LED lighting solution

LED T8 Tube 180lm/W



LED Fixture Light



FPL Light

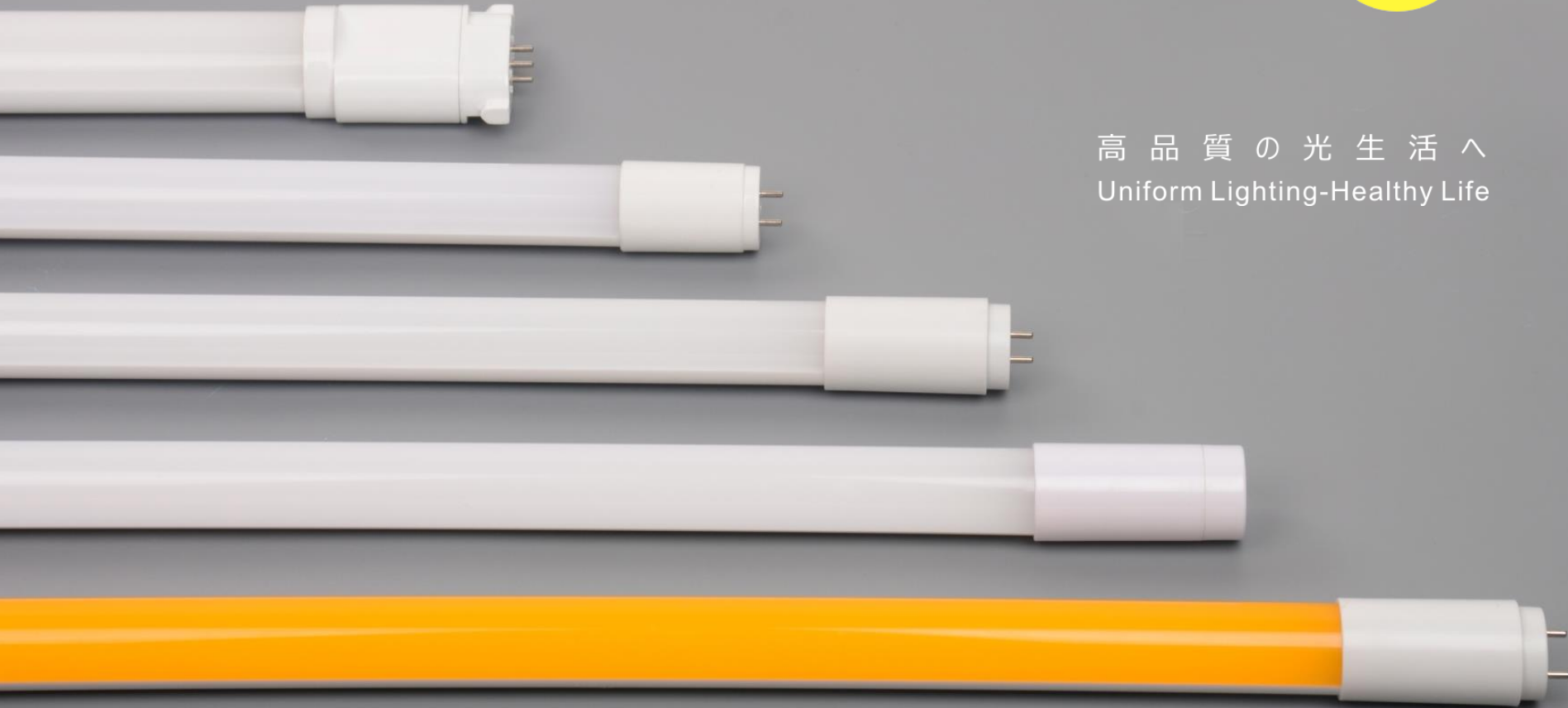


Downlight





高品質の光生活へ
Uniform Lighting-Healthy Life



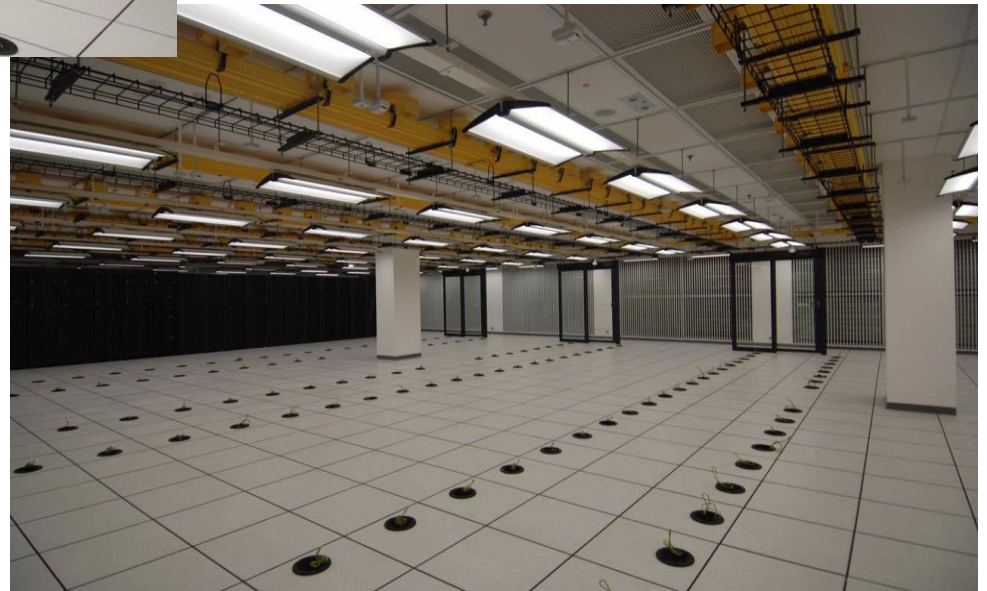
APPLICATIONS





Indirect LED Lighting fixtures in LOUIS VUITTON
Hongkong office

Customized LED Lighting Lamp for LV at Hongkong
& Taiwan





Total 11500pcs of LED T8 tubes at TBS Tokyo Headquarters





LED T8 tubes applied in City Hospital

LED tubes replace at Schools





R&D



The patented design for LED Tube as below, can bring us high efficiency and high uniformity base on MCPET technology, the tube structure design is basis on the optical Utilization principle, good uniformity is from the special design.



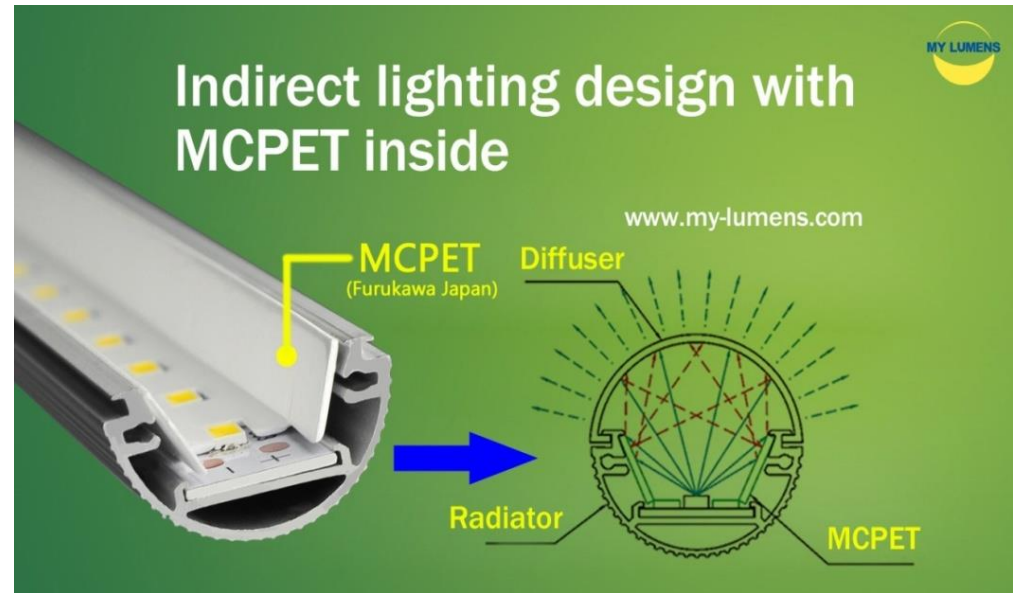
LED tube patent number: 2011205408362

Indirect LED lighting Solution

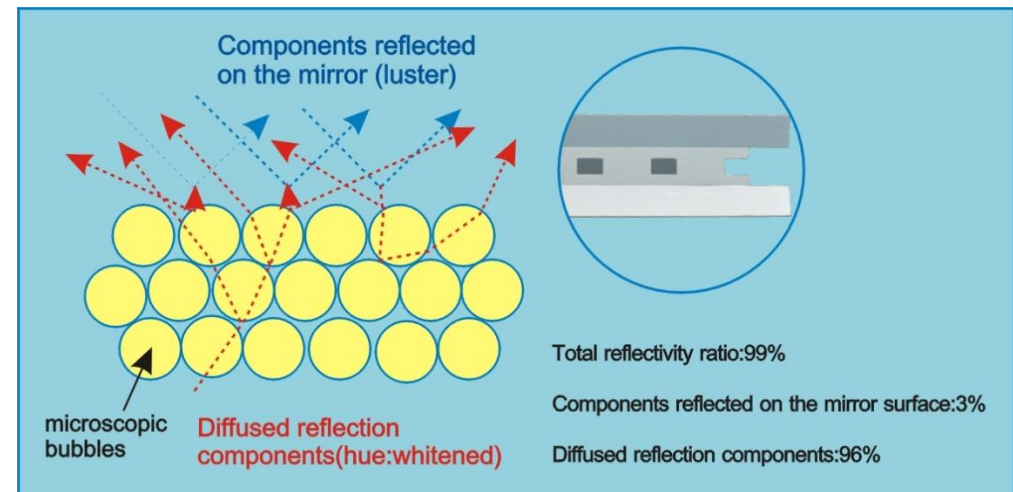
A Special Diffuser material from Taihei Chemical Japan be used together with Furukawa MCPET.

Base on this special design, the LED light will be diffuse reflected many times within the lamps without lowest loss.

The output light from the high haze and high transmittance diffuser, so the light will be more comfortable and uniform.



Lights cut into MCPET and repeat reflection and refraction at the interface of air and PET.



Obtain high lumen by NOT dissipating the lighting that come out from the smd chip



MCPET (Furukawa Japan)

www.my-lumens.com

Become a whole baffle-board

New technology MCPET inside

Mid-power SMD LED chips solution

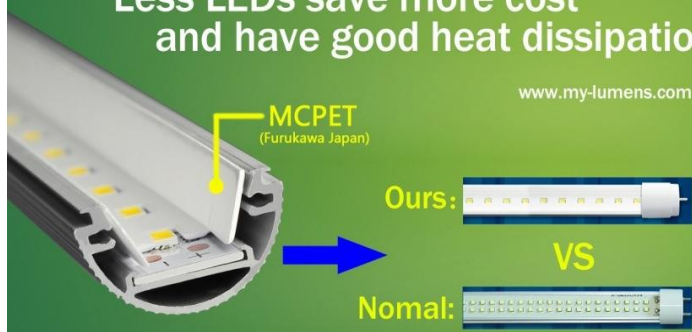


MCPET (Furukawa Japan)

www.my-lumens.com

Mid-power LEDs solution

Less LEDs save more cost and have good heat dissipation



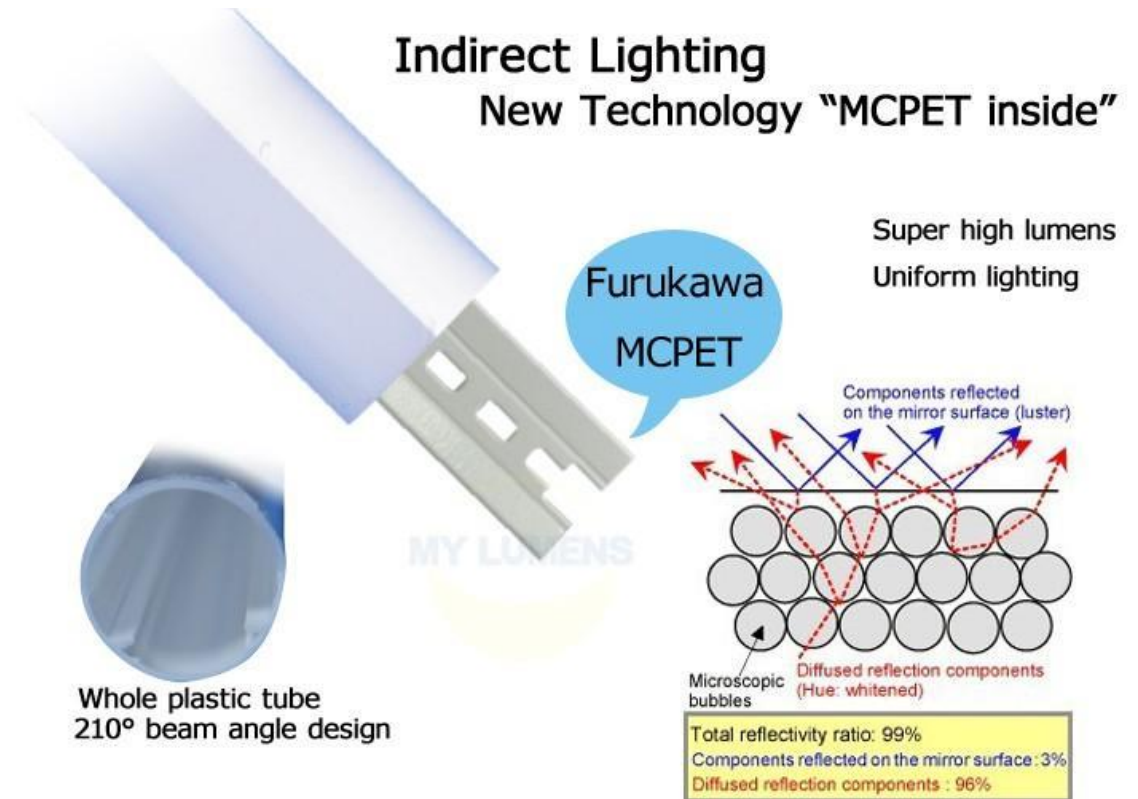
MCPET (Furukawa Japan)

www.my-lumens.com

Ours: VS Normal:

Good Heat Management, High PF Driver

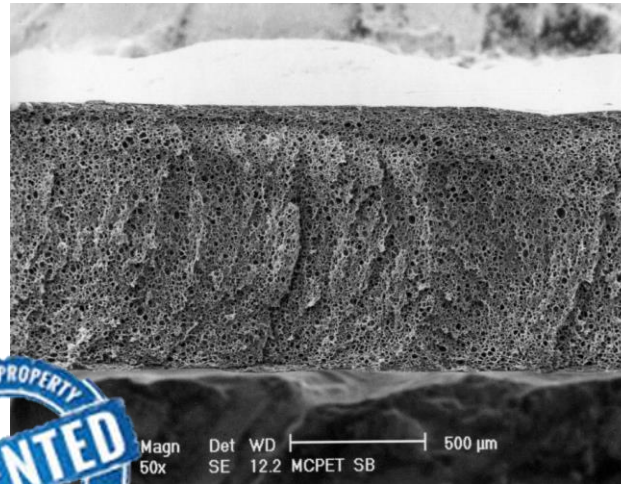
MCPET inside is a new technology from our R&D department which applied in high-effect Lighting industry, which integrated with optics, thermotics, electronics. With MCPET inside, LED products can avoid the normal problem of darkness and spot from the surface of lens.



Appearance

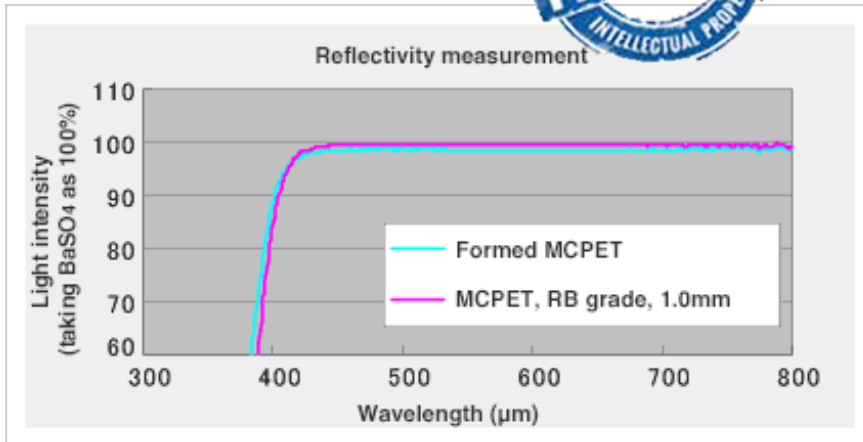


Inside



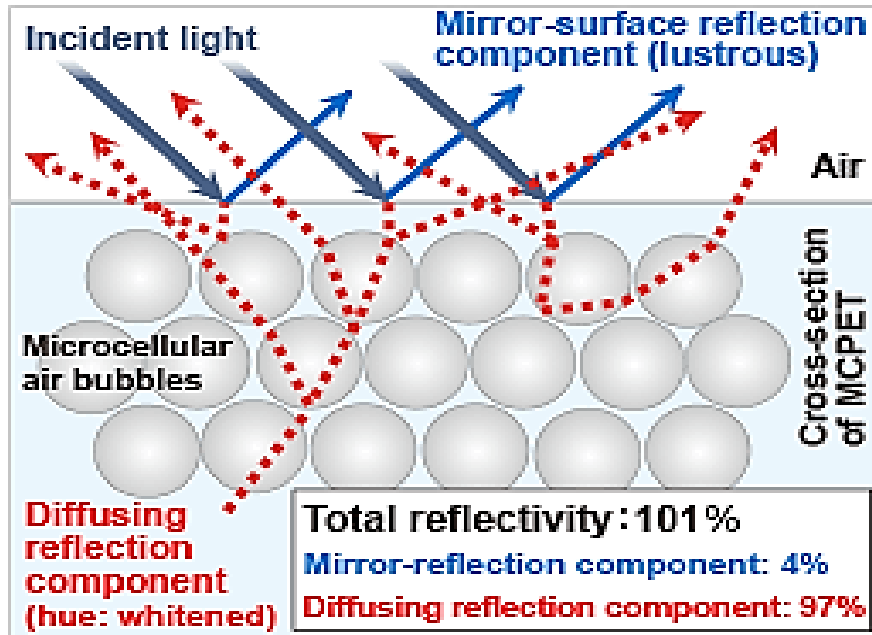
Features

MCPET is a microcellular foamed sheet of polyethylene terephthalate (PET). The sheet consists of extremely small microcellular air bubbles, which are 10μm or less in diameter.



Patented with Furukawa Electric Group





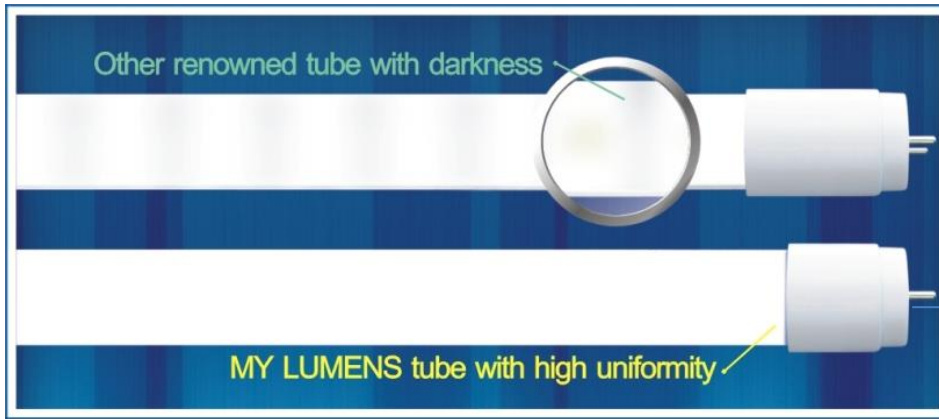
Features for Lighting Application:

The reflectivity is higher than 99%, the stiffness is appropriate for forming, and thermal forming is possible. Its raw material is more heat resistant than ordinary PET, so that it is applicable to reflectors for LEDs and incandescent lamps.

The high reflectivity allows for reduction of LEDs, significantly cutting power consumption and eliminate the irregularity of brightness due to LEDs.



Uniformity Comparison



Our LED tubes can present perfect uniformity with MCPET through maximum diffusion reflection, by using lesser LEDs than other led companies.

Structure of MY LUMENS Tube MCPET inside "MY LUMENS" LED Tube light

Structure of MY LUMENS Tube

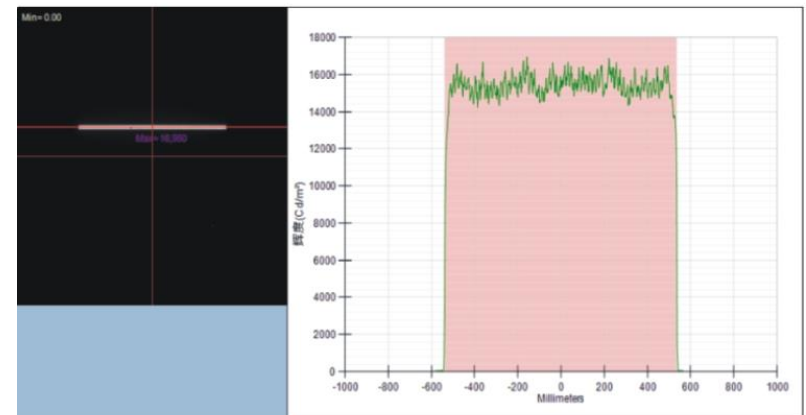


Other company Tube



Provide Test Report for Light Distribution and Luminaire Uniformity

Tube Surface brightness distribution



Note: The curve indicates good uniformity of brightness

For the purpose of thermoelectric separation, the driver of our LED tube is internal built with our unique design by our engineer team, light and small, but best reliability with high performance.

All main materials are purchased from USA and Japan (Mofset from Onsemi /Aluminum Capacitor from Rubycon Japan).

Construction details



(1), Smaller driver put in ends which separated to PCB is good to heat dissipation

Aluminum electrolytic capacitor: Rubycon
MOSFET: Onsemi
Chip capacitor: Samsung
IC : FL5854 Japan
(2) , Best material for driver



(3), Good stability

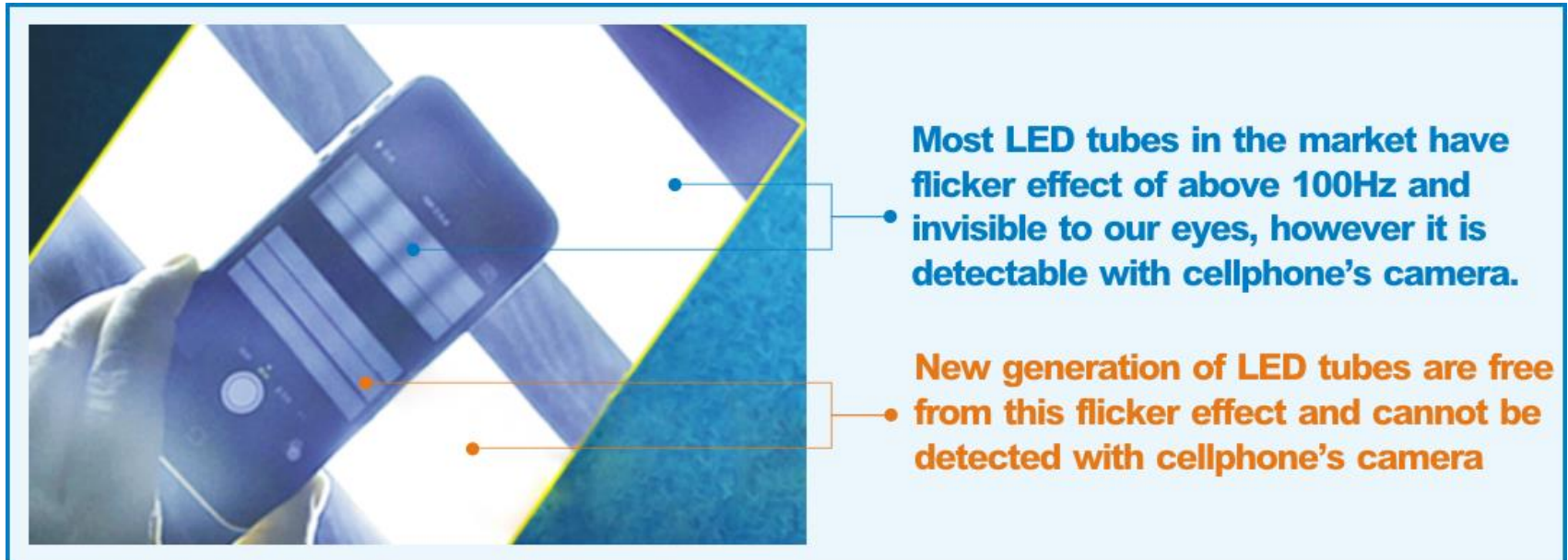
Our driver can pass Japan EMC test.



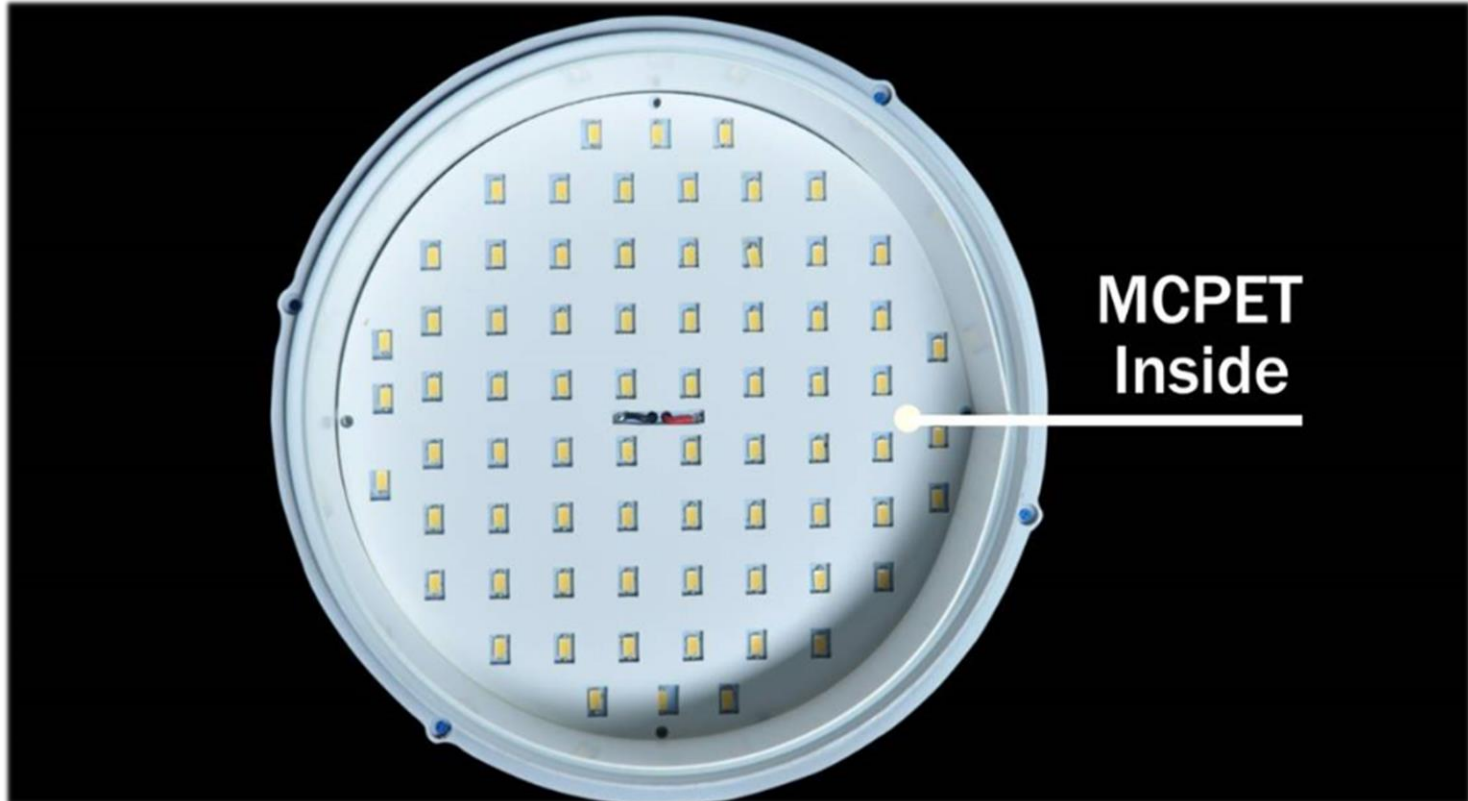
(4), Good heat dissipation



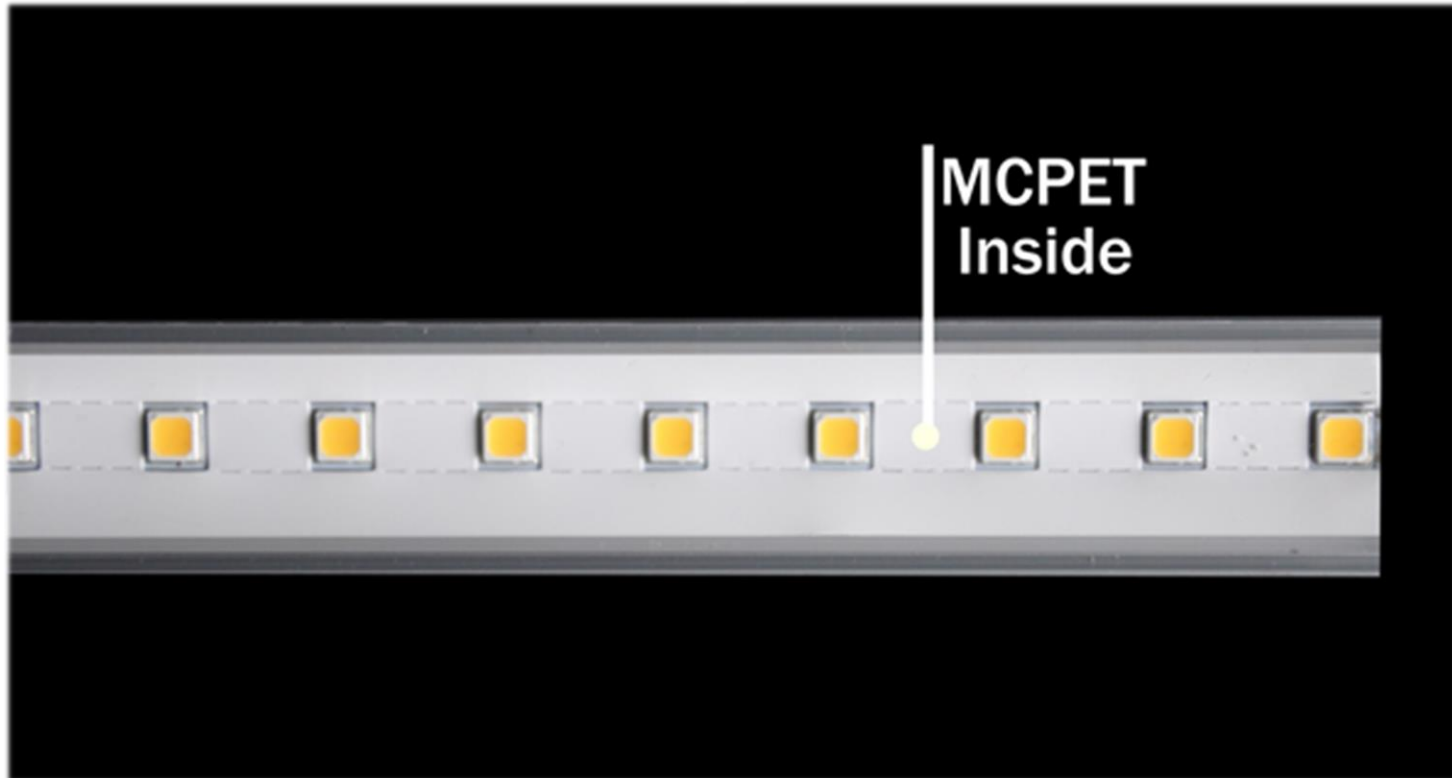
Total Internal Reflection remove hotspot, low Glare, no flicker and reduce Blue Wavelength.



September 2010, we provided solution for 90lm/W LED downlight for Osram Lighting, Philips Lighting and TCP USA.



September 2010, we joined the reference design for LG tube light solution of 80pcs LG 5152 LEDs.



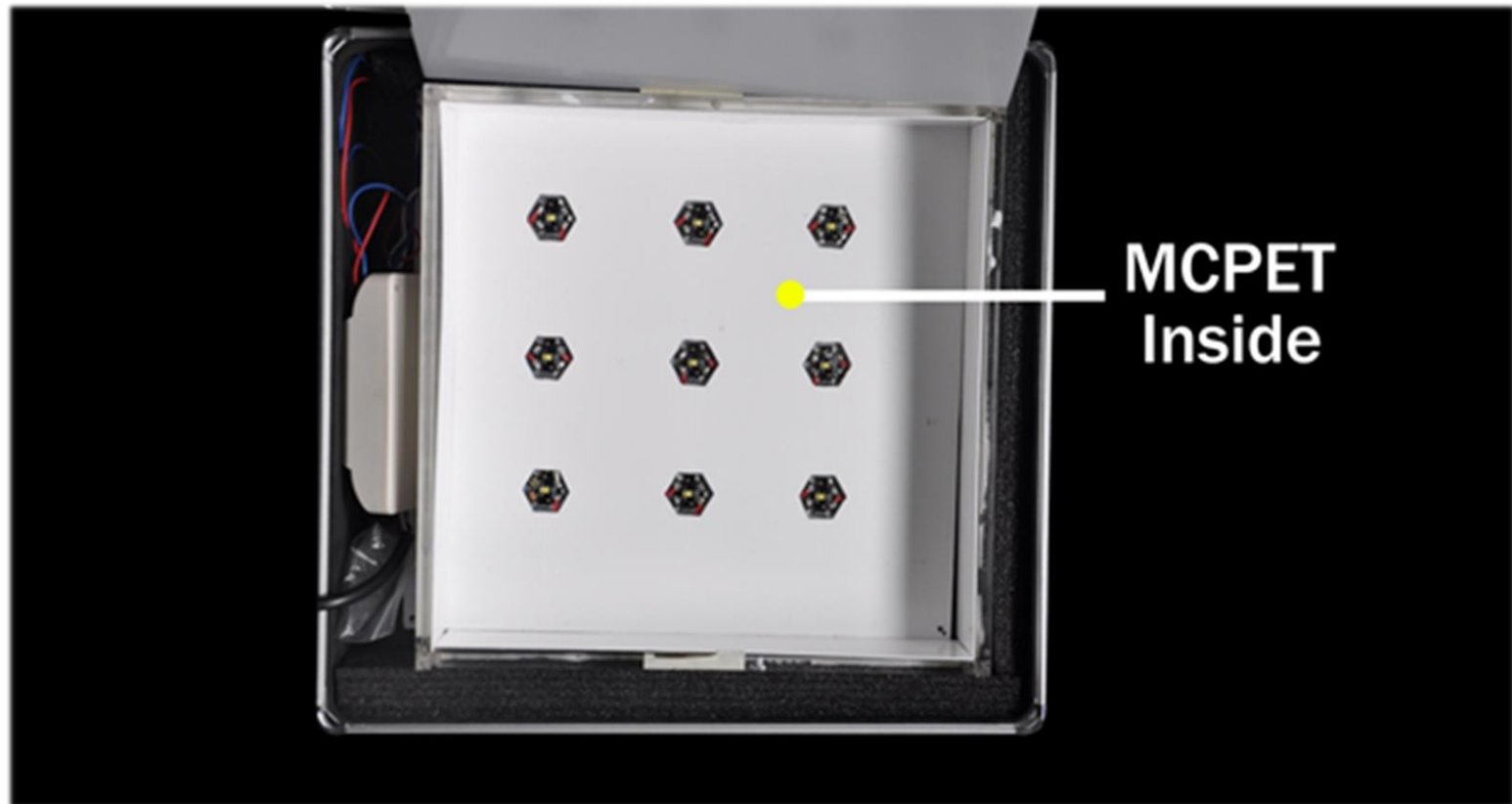
In 2011, we provided LED tube light solution of 63pcs Samsung 5630 LEDs for CREE, Samsung, Konka and EFG.



In 2011, we launched 310° beam angle LED bulb light solution that able to pass US Energy star.



In 2010, we joined the reference design of Philips Lumileds Rebel ES panel lighting solution, which was also applied for high power LED panel/signboard lighting solutions for LV and PRADA.

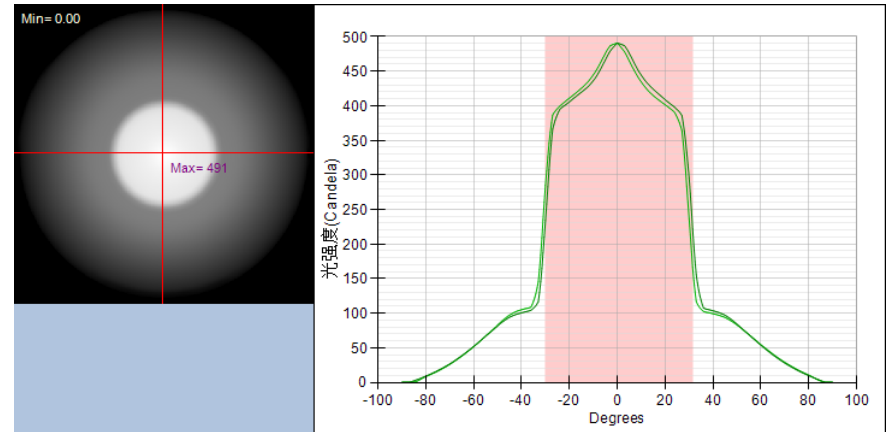
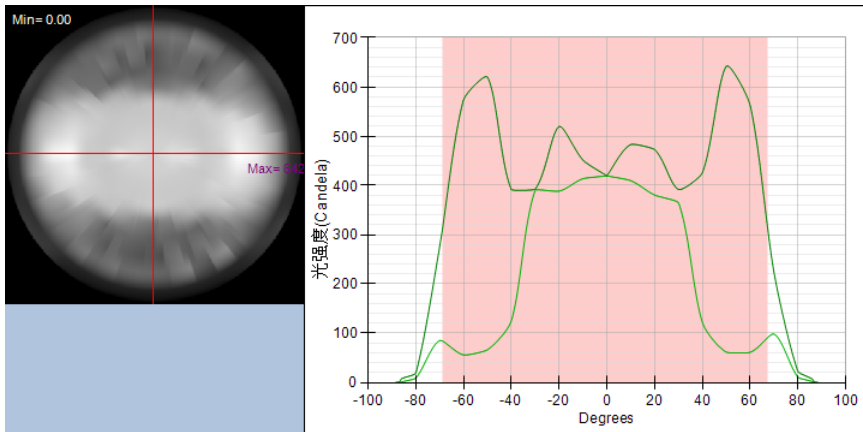




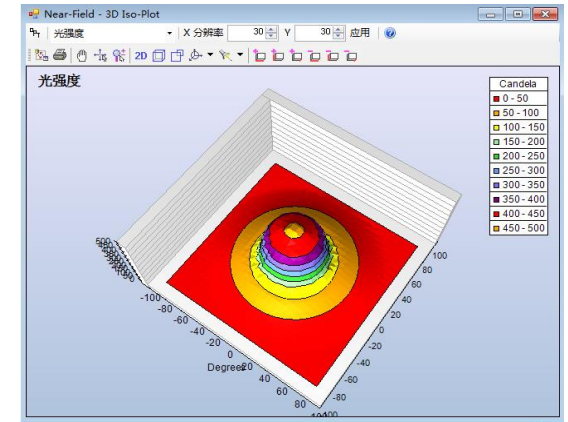
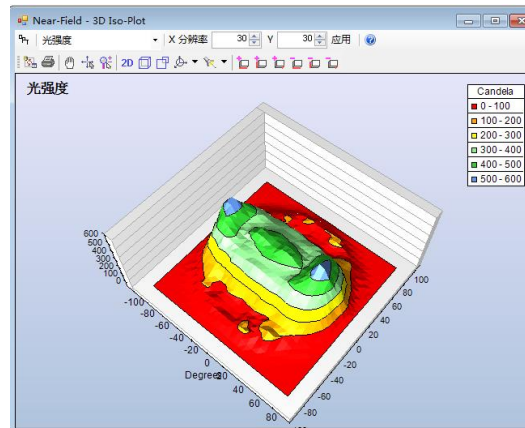
Please ask for the test data if some maker say his performance is the best.

Base on the leading test lab ,we can offer different solution for optics design and the test data for optics like light distribution of Lighting fixture.

*Below pictures as the light distribution of street light and down light.



3D Lighting Pattern Distribution



We are listed in Cree website as below for reference design:


XLamp Reference Designs		Version	Last Updated
CXA2011 6in Downlight Reference Design CXA2011 LEDs	Solution 1	0	25 Apr 2012
Downlight Reference Design XM-L LEDs	Solution 2	0	25 Apr 2012
Pendant Luminaire Reference Design (English) MP-L EasyWhite LEDs		1	27 Sep 2010
Pendant Luminaire Reference Design (German) MP-L EasyWhite LEDs		1	27 Sep 2010

7 Model C3-85, Bright View Technologies, www.brightviewtechnologies.com

8 Flying Technology Co, www.flyingtechnology.com provide the Downlight solutions, you also can see website: www.my-lumens.com.. about the video of Lighting Fair

Copyright © 2012 Cree, Inc. All rights reserved. The information in this document is subject to change without notice. Cree®, the Cree logo and XLamp® are registered trademarks of Cree, Inc. For product specifications, please see the data sheets available at www.cree.com. For warranty information, please contact Cree Sales at sales@cree.com.

Page 8 **8**

CREE 

**XLAMP XM-L LED
6-INCH DOWNLIGHT
REFERENCE DESIGN**



学校など子供の目を守るLED

Healthy LED To Protect Children's Eyes

特集3 LED照明
目にやさしいLED照明で、学校の雰囲気も明るく
「目を守る」ブルーライトカット

「目を守る」LED照明という新発想に長づき開発されたブルーライトカットLED東光灯「Reach」、環境に力を入れるオイスカ高校では、東光灯や水廻りなどの照明施設を、「Reach」に取り替え、生徒の健康を考えた省エネを大胆。その効果や生徒の反応などを寺田校長、校長、校長次郎事務長の真名に話を聞いた。

「目にやさしい」が導入のポイント
 LEDの導入の経緯として校長事務長は「授業を遅くして30年以上が経過して、最近のLEDの導入が徐々に増えている」と話す。寺田校長は「目にやさしいLED照明の導入は、健康な子供を育てるために必要だ」と話す。寺田校長は「目にやさしいLED照明の導入は、健康な子供を育てるために必要だ」と話す。

照明設備を全てLEDに
 校長は「学校の照明は、生徒の目にやさしいLED照明に全てを置き換える」と話す。寺田校長は「目にやさしいLED照明の導入は、健康な子供を育てるために必要だ」と話す。

ブルーライトを10~20%削減
 LED照明は、これまで低コストで導入が難しかったが、「目にやさしい」をコンセプトにしたものは本格的に導入された。寺田校長は「目にやさしいLED照明の導入は、健康な子供を育てるために必要だ」と話す。


お問い合せ先
PRIME STAR
プライム・スター株式会社
 TEL: 03-6869-6606
 URL: <http://www.primestar.co.jp/>



Why many customers are satisfy with this product even the price is higher—because of the high quality, nearly 98% satisfaction rate from Japanese end customers.

*Data is from the internet survey at rakuten.co.jp

この商品を購入された方のレビュー

 [すべてのレビューを見る\(3件\)](#)
[⇒このショップのレビューを見る](#)

総合評価 ★★★★★ 5.00

おとせいちゃんさん 50代/男性

評価 ★★★★★ 5.00

投稿日:2014年01月13日

少し金額が高かったけれど、2600lmの明るさが気に入り、キッチン照明の交換用として購入しました。今までの蛍光灯と変わらない明るさで、とても明るくとても満足しています。

 実用品・普段使い  家族へ  はじめて

ミラーさん 40代/男性

評価 ★★★★★ 5.00

投稿日:2013年12月27日

前回購入して使用していたら知り合いの人に頼まれたので自分用も含めて追加購入です

ミラーさん 40代/男性

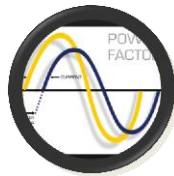
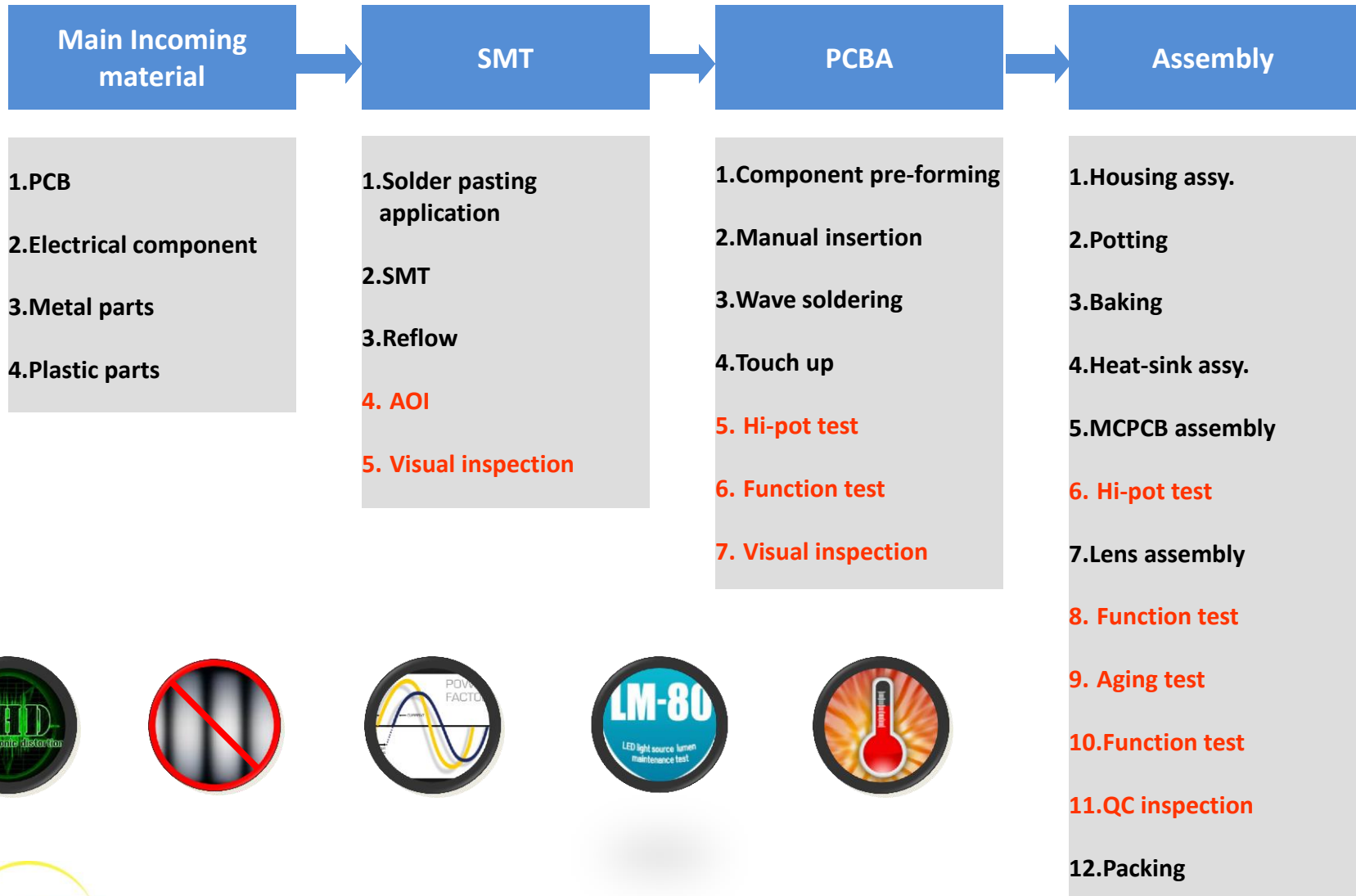
評価 ★★★★★ 5.00

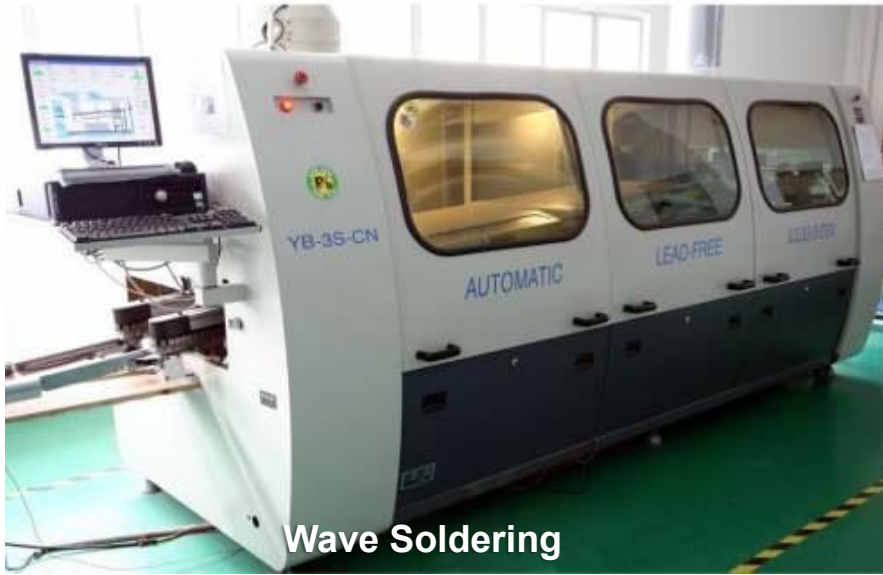
投稿日:2013年12月22日

2灯式の片方だけ換えてみたら明るさが全然違いました

PRODUCTION







Wave Soldering



Electronic Assembling



Glue Machine



OVEN



Potting Machine



SMT Lines



SMT Machine

Assembly Line and Equipment



X-Ray



AOI



Plastic injection



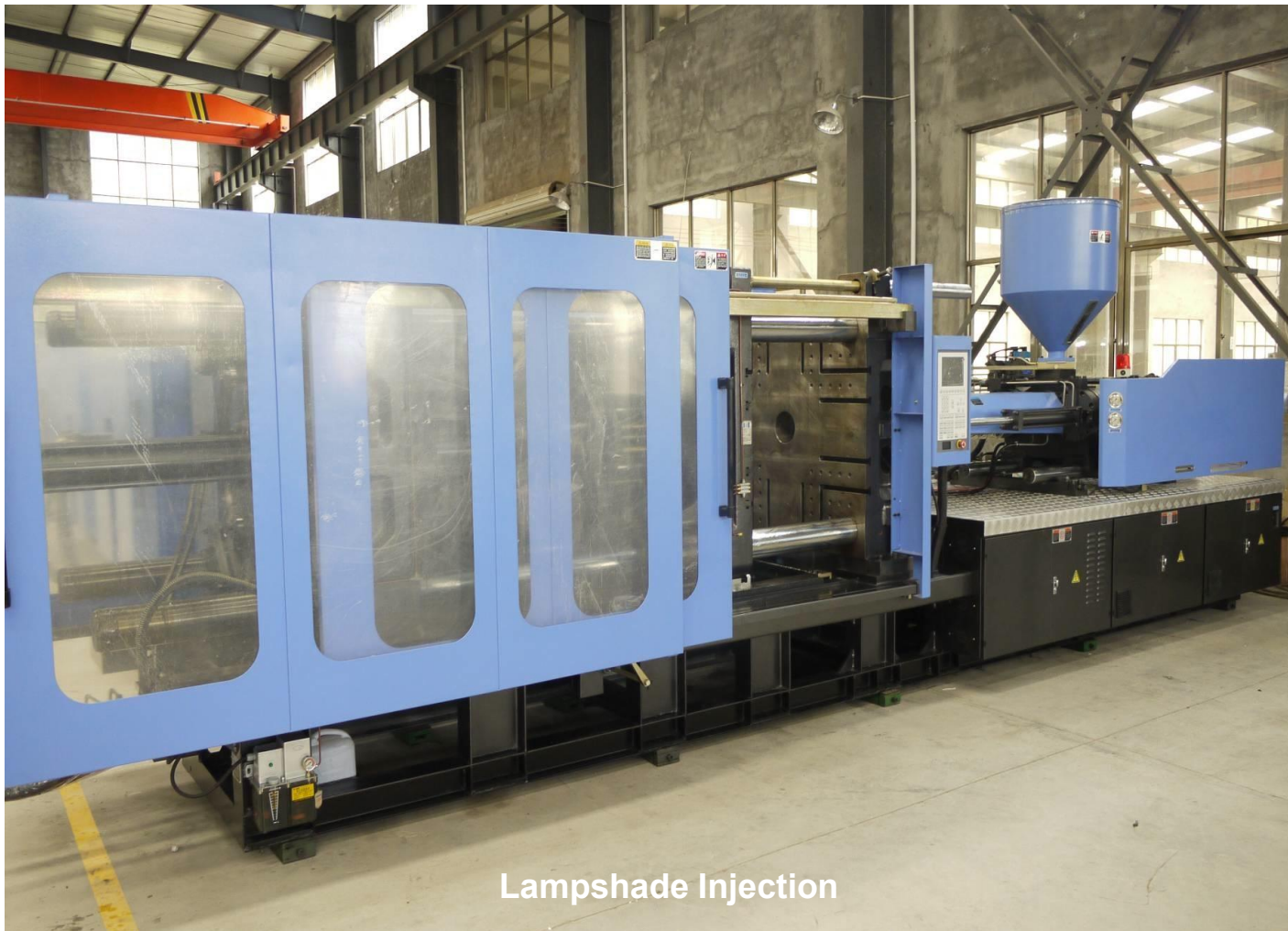
Plastic blowing



Plastic extrusion

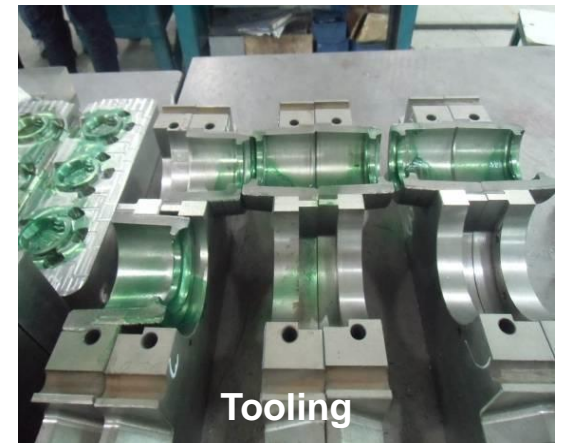


Aluminum die casting



Lampshade Injection

1000T Injection Machine
Max. diameter of part:
800mm
Evaluated capacity:
30000pcs/month



Electronic



Component pre-forming



Wave solder carrier return automation



Auto-function tester

Assembly



Auto optical tester



Laser marking automation



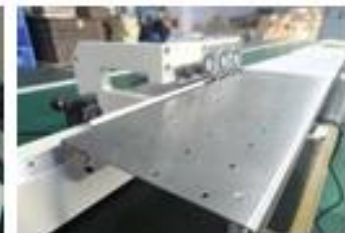
Pin Rivet automation



Auto potting machine



Glue dispenser automation



Auto de-panel



Full automation insertion machine (AI/RI)



Full automation potting line



Full automation aging line



Full automation assembly line



Auto-soldering



Auto-Screw mounting automation



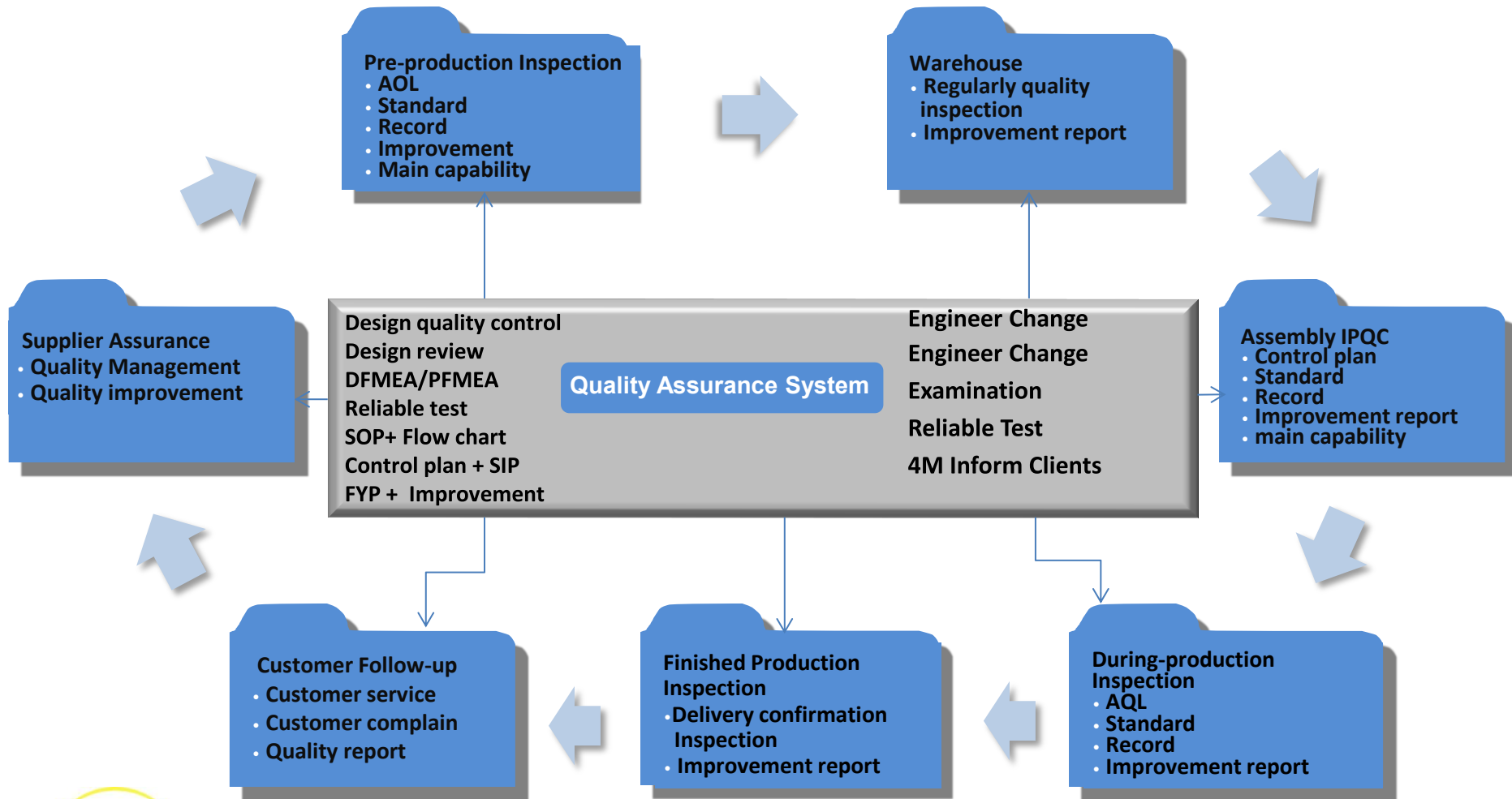
Lean Production- Visual Management

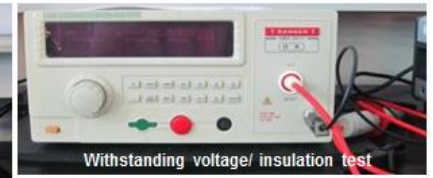
QUALITY



Quality Assurance System

We have updated latest quality surveillance process to comply with ISO system.



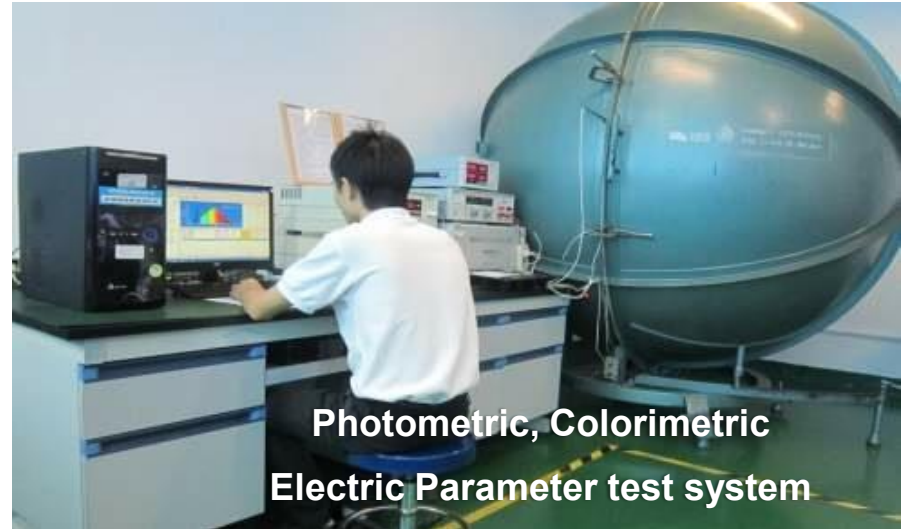


Safety Testing



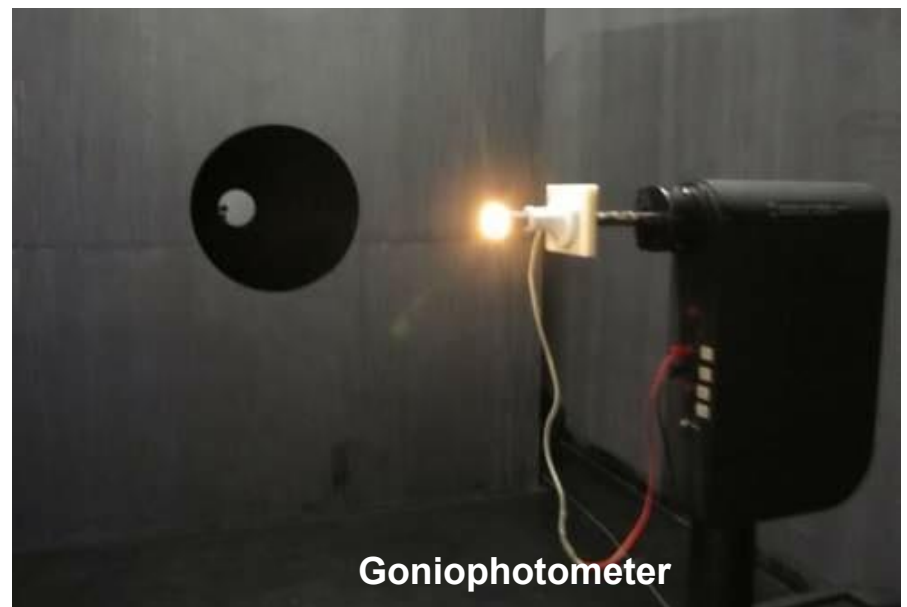


Light Distribution Analysis



Photometric, Colorimetric
Electric Parameter test system

Optical Testing



Goniophotometer



High temperature testing



Temp impact chamber



IP testing



Fall off testing



Constant temperature/humidity testing



UV testing



Vibration testing



Simulation transportation vibration testing

LED Retrofit Reliability Testing



LED thermal resistance & junction temperature testing



LED aging testing



LED aging testing



LED aging testing



Aging Testing



Aging Testing

Aging Testing



60 Degree High Temperature Testing

CERTIFICATION



Verified Witness Lab



Qualified Testing Location

This is to confirm that
 Shenzhen Eastfield Lighting Co.,Ltd
 No.6 Industrial Zone, Fugaodong Road, Gaoqiao District, Pingdi Street, Longgang Area, Shenzhen, Guangdong, China.

Registration No: WL-083

has been assessed according to ISO 17025 and accepted as cooperated test facility. Test data within qualified scope in following attachment can be accepted by SGS-CSTC Standards Technical Services Co., Ltd EEC laboratories with pre-assessment and supervision from assigned SGS engineers.

On behalf of
 SGS-CSTC Standards Technical Services Co., Ltd.
 Consumer Testing Services
 HEC E&E Consumer



Mr. Jeff Zhao
 SR, Laboratory Manager



Date of issue: 25 October 2012
 Valid up to: 24 October 2013

SGS-CSTC Standards Technical Services Co., Ltd.
 No. 198 WEIZHU Road, SCIENCE-CIT Park, Guangzhou Economic & Technology Development District, Guangzhou, Guangdong, CHINA 510963
 Tel: +86 20 8215 5555 Fax: +86 20 8207 5056



Zertifikat zur Anerkennung
Certificate of acceptance

von / of
 Shenzhen Eastfield Lighting Co., Ltd.
 No. 6 Ind. Zone, Fugaodong (Longteng) Rd, Gaoqiao Dist., Pingdi St., Longgang Area, 518116 SHENZHEN CHINA

durch die / by the
VDE Prüf- und Zertifizierungsinstitut GmbH
VDE Testing and Certification Institute

für das / for the
Test Data Acceptance Program

ID Nummer	40036276
ID number	2014-11-22
Gültig bis	
Valid until	
Aktuelles Referenz	5000653-9901-0001/17023-B
Reference number	

Dieses Zertifikat ist nur gültig zusammen mit dem gültigen Dokument „TDAP SCOPE“. Es berechtigt nicht zur Nutzung eines markenrechtlich geschützten Zeichens des VDE.
 This certificate is valid only in conjunction with the valid document „TDAP SCOPE“. It does not authorize to use any of the legally protected VDE marks.

VDE Prüf- und Zertifizierungsinstitut GmbH
VDE Testing and Certification Institute
 Fachbereich / Section F1



2012-11-23

Merkenstrasse 29, 50059 Offenbach, Germany
 phone: +49 69 83 06-0, fax: +49 69 83 06-550
 e-mail: gdr-testlab@vde.com, www.vde-testlab.com




EMC / PSE

SHENZHEN LCS COMPLIANCE TESTING LABORATORY LTD. Report No.: LCS1511070573E

EMC TEST REPORT
For
MY LUMENS Technology Limited
LED Tube

Model No.: MYT8-7, MYT8-10, MYT8-13, MYT8-15,
MYT8-18, MYT8-20, MYT8-23

Prepared for : MY LUMENS Technology Limited
Address : RM 1407, Shenzhen University-town business Park, XILI
Town, Nanshan District, Shenzhen, China.

Prepared by : Shenzhen LCS Compliance Testing Laboratory Ltd.
Address : 1/F., Xingyuan Industrial Dick, Tongda Road, Bao'an Avenue,
Bao'an District, Shenzhen, Guangdong, China

Tel : (+86)755-82591330
Fax : (+86)755-82591332
Web : www.LCS-cert.com
Mail : webmaster@LCS-cert.com

Date of receipt of test sample : October 10, 2014
Number of tested samples : 1
Serial number : Prototype
Date of Test : October 10, 2014 - December 10, 2014
Date of Report : December 10, 2014

CE

This report shall not be reproduced except in full, without the written approval of Shenzhen LCS Compliance Testing Laboratory Ltd.

Shenzhen CTL Electromagnetic Technology Co., Ltd.

Declaration of Conformity

Certificate No. : CTL120617837-PSC
Applicant : MY LUMENS Technology Limited
Address : 709, 7/F, North Bldg, Gangsong Mansion, Tairan 6 Road, Futian District,
Shenzhen, China
Product : LED Tube
Trademark : MY LUMENS
Model(s) : MY-T81220830BAA, MY-T81220850BAA, MY-T81220865BAA,
MY-T81220830BCA, MY-T81220850BCA, MY-T81220865BCA,
MY-T81220830BEA, MY-T81220850BEA, MY-T81220865BEA,
MY-T81220850BBA, MY-T80610830BAA, MY-T80610850BAA,
MY-T80610865BAA, MY-T80610830BCA, MY-T80610850BCA,
MY-T80610865BCA, MY-T80610830BEA, MY-T80610850BEA,
MY-T80610865BEA, MY-T80610850BBA

Manufacturer : MY LUMENS Technology Limited
Address : 709, 7/F, North Bldg, Gangsong Mansion, Tairan 6 Road, Futian District,
Shenzhen, China
Test Report : CTL120617837-PS

Test Standards:
IEC 60598-1:2008,
IEC 62031: 2008, IEC 61347-2-13:2006,
IEC 61347-1:2007+A1:2010, IEC 61195: 1999.

This certificate of conformity is based on an evaluation of a sample of the above mentioned product.
This is to certify that samples of the above mentioned Non-Specified Electrical Appliances and
Materials comply with requirements stipulated by Article 6, Paragraph 1 of the Electrical Appliance and
Material Safety Law and the technical requirements stipulated by the ordinance of the Ministry of
International trade and industry.

Linny Qi
For Chief Executive
August 23, 2012

A46, Zone B, 4/F, Block 20, Guangqian Industrial Park, Longshu Road, Nanshan, Shenzhen 518055, China
Tel : (86) 0755-88480184 Fax : (86) 0755-88480184-408 Web: www.cctl-lab.com

CE / RoHS

CERTIFICATE OF CONFORMITY



CERTIFICATE of Conformity

Reference No.: LCS15110705725

Applicant : MY LUMENS Technology Limited

Address : RM 1407, Shenzhen University-Town Business Park, XILI Town,
Nanshan District, Shenzhen, China

Trademark : MY LUMENS

Product : LED Tube

Model(s) : MYTB-7, MYTB-10, MYTB-13, MYTB-15,
MYTB-18, MYTB-20, MYTB-23

Parameters : 100-240VAC, 50/60Hz, Max.22W

The submitted products have been tested by us with the listed standards and found in compliance with the following European Directives:
The LVD Directive 2014/35/EU

EN 60598-1: 2008+A11: 2009; EN 62031: 2008+A1: 2013; EN 62483: 2010;
EN 62471: 2008; EN 61347-1: 2008+A1: 2011+A2: 2013; EN 61347-2-13: 2004

The tests were performed in normal operation mode. The test results apply only to the particular sample tested and to the specific tests carried out.

This certificate applies specifically to the sample investigated in our test reference number only. The CE markings as shown below can be affixed on the product after preparation of necessary technical documentation.

Other relevant Directives have to be observed.

CE


 Manager
 December 10, 2014

Shenzhen LCS Compliance Testing Laboratory Ltd.
 1/F., Xingyuan Industrial Park, Tongda Road, Bao'an Avenue, Bao'an District,
 Shenzhen, Guangdong, China
 Tel: (86)755-82591330
 Http://www.LCS-cert.com

Fax: (86)755-82591332
 Email: webmaster@lcs-cert.com



CERTIFICATE OF CONFORMITY



CERTIFICATE of Conformity

2011/65/EU Restriction of Hazardous Substance

Reference No.: LCS1409301356S

When tested as specified, the submitted sample complies with the requirements of Commission Decision of 21 July 2011 amending Directive 2011/65/EU.

Applicant : MY LUMENS TECH LTD

Address : RM1407 SHENZHEN University-Town Business Park,XILI Town,
Nanshan District,Shenzhen,China

Trade Mark : MY LUMENS

Product : LED Tube

Model(s) : MY-TB1550716232E;MY-TB1250716232E;MY-TB0650710112DL;
MY-TB1250812202E;MY-TB1250816202H;MY-TB1550720262E

The test report is issued by the Company subject to its General Conditions of Service printed overleaf. Attention is drawn to the limitations of liability, indemnification and jurisdictional issues defined therein. The results shown in this test report refer only to the sample(s) tested unless otherwise stated. This Test Report cannot be reproduced, except in full, without prior written permission of the Company.

Other relevant directives have to be observed.

RoHS


 Manager
 October 08, 2014

Shenzhen LCS Compliance Testing Laboratory Ltd.
 1/F., Xingyuan Industrial Park, Tongda Road, Bao'an Avenue, Bao'an District,
 Guangdong, China
 Tel: (86)755-82591330
 Http://www.LCS-cert.com

Fax: (86)755-82591332
 Email: webmaster@lcs-cert.com

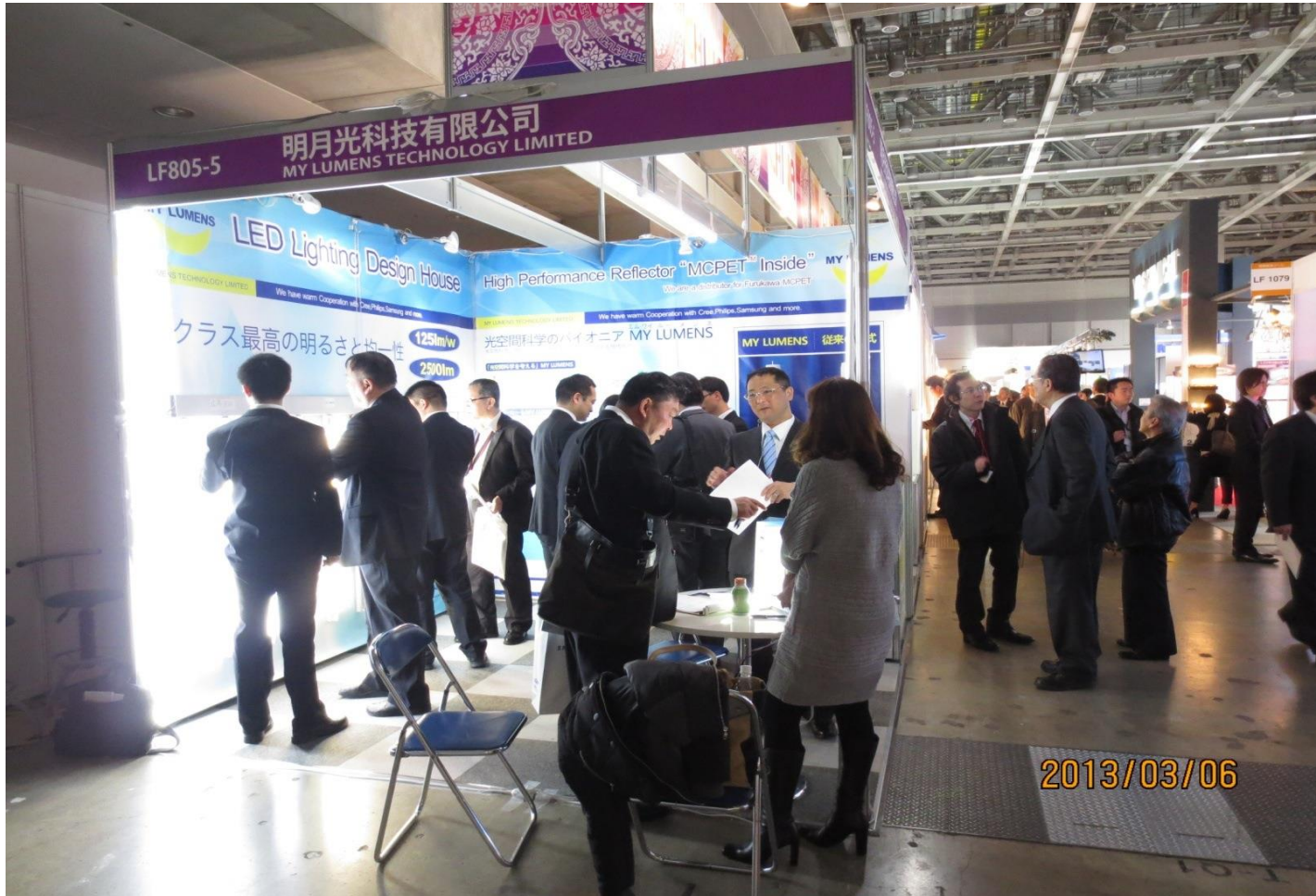


MARKETING





June 2012 Guangzhou Lighting Fair Jointed together with Furukawa Japan



March 2013 Japan Lighting Fair

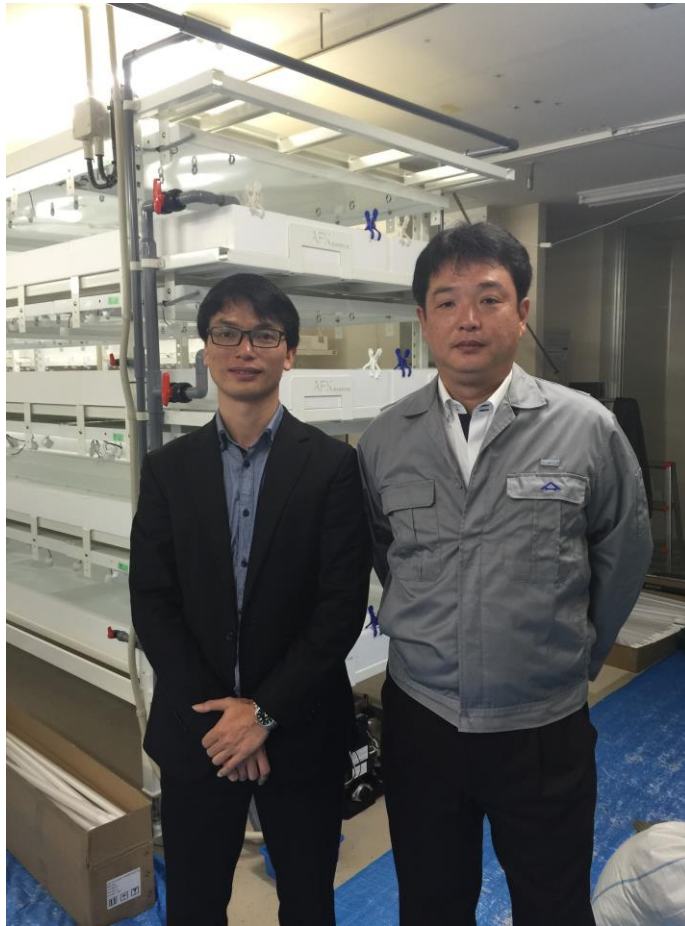




We are the Distributor and R&D partner for Furukawa MCPET

Join Innovation in Lighting Symposium together with Furukawa





Visit the NTT project together with Furukawa
(using our led tubes at FukuShima)



Visit the Daiwa House HQ at Osaka





Visit the Customer at Tokyo





VALUE



Why our tubes stand out



Flicker-Free
< 5%



Low Glare
Indirect Lighting



110 to 160 lm/W
30% Less Blue
Indirect



Low THD
< 15%



ULVO,
Thermal &
Mechanical



Proven
Factory/Comm.
School/Hospital



High PF
> 0.97



Low Temp
< 35°C



3-year
Warranty



High CRI
> 80









LM-80
LEDs



TUV, PSE,
CE

Besides sophisticated HRIL technology and environment protection, Energy Savings is our key contribution to the LED lighting solutions, below is our advantage comparing to other suppliers:

LINEAR FLUORESCENT TUBE BENCHMARK (SAME LUX at 1m)

Energy Savings is the Biggest contributor to the total cost of operating the lamp					Type						
Annualized Lifecycle Cost					Unit	T8 Fluorescent with Magnetic Ballast	T8 Fluorescent with Electronic Ballast	T5 Fluorescent with Electronic Ballast	T8 LED Glass Tube @ AC Approach	T8 LED Tube 1800lm @100lm/W	T8 LED Tube 1800lm @170lm/W
Hours	Day	Week	Total Hrs	\$/Kwh							
24	7	52	8736	0.35							
Light Decay, THD, PF, FLICKER					RATE	NO GOOD	GOOD	GOOD	NO GOOD	GOOD	VERY GOOD
Luminaire Power					W	44	36	28	18	18	11
Same LUX Effective Efficacy					lm/W	41	50	64	100	100	170
Lamp Lifetime					Hours	8000	8000	10000	20000	30000	40000
Replacement over 40,000 hrs					Qty	5.0	5.0	4.0	2.0	1.3	1.0
Cost per Luminaire (Lamp/Ballast)					\$	10	25	25	20	35	80
Cost of Labor for Replacement					\$	3	3	3	3	3	3
Cost of Replacement over 40,000 hrs					\$	\$ 65.00	\$ 140.00	\$ 112.00	\$ 46.00	\$ 50.67	\$ 83.00
Annual Energy Cost					\$	\$ 134.53	\$ 110.07	\$ 85.61	\$ 55.04	\$ 55.04	\$ 32.37
Total Cost of Ownership (40000 hr)					\$	\$ 681.00	\$ 644.00	\$ 504.00	\$ 298.00	\$ 302.67	\$ 231.24



Upgrade to 170lm/w

Competitor's Low Cost T8 Tube Strategy

- Less LED quantity, drive higher current which results in Glare and shorter Life
- Lower Cost Driver with simpler design
- Poor THD, low PF, Flicker, Low Efficiency
- No LM80/LM79 certifications
- Cheaper Capacitors (<10k hours)
- Cheaper ULV2 Plastic Diffuser, tube drops
- No aluminum for HEAT and Mechanical
- > 20% Flickering
- Affects Photography/Videography
- May Affect Health (Strobing)
- Cheaper Tube because Lower BOM Cost

US DOE Caliper Testing to protect US consumers

- 50% does not meet specs or not as claimed
- Light decay too fast due to poor thermal management
- Narrow beam, dark walls

MY LUMENTS Differentiation

- Higher LED count with <35°C at leads
- Lower current density, less Glare
- Only LM80 LEDs
- Driver passed PSE, TUV with Industrial Grade Capacitors/transformer
- Aluminum for mechanical strength and HEAT dissipation
- 100% reflectance material (Furukawa, patented design)
- Less Blue Light (30% Less)
- Flicker Free down to 5mm (<5%)
- Higher BOM Cost and Better Light Quality
- Flicker Free Industrial Grade, 3 yrs Warranty





THANKS!

MY LUMENS TECHNOLOGY LIMITED

Office Address: 7F, Block 5, Yali Industrial Park, Tianbao Road No.13, Ying Renshi New Village, Shiyan Town, Bao'an District,
Shenzhen P.R China

Tel: 86-0755-29810605 86-0755-29810585 Fax: 86-0755-23716085

Email: mets.zhang@my-lumens.com boking.pang@my-lumens.com

