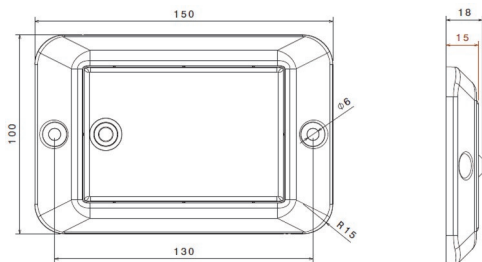


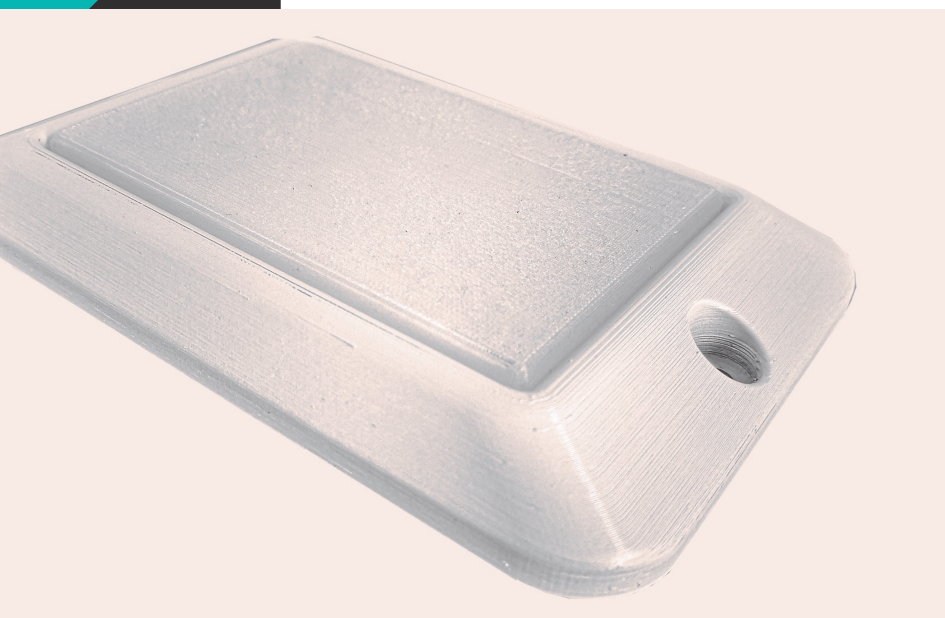
# STL-100 interior lights.

Developed for the harshest environments.



**Ideal for commercial and specialist vehicles, the STL-100 series is available in switched, un-switched or PIR versions. Ultra compact and slim, these interior lights can be fitted in a variety of places with unbeatable flexibility.**

- Ultra high performance LED interior light
- 750 lumens output
- Low profile design
- Impact resistant, lightweight materials
- PIR option
- IP69K hermetic sealing using ultrasonic welding technology
- 6000K colour temperature
- Easy installation & electrical connection
- Fully compliant with the external projections requirements for head impacts
- ECE Regulation 10 approved

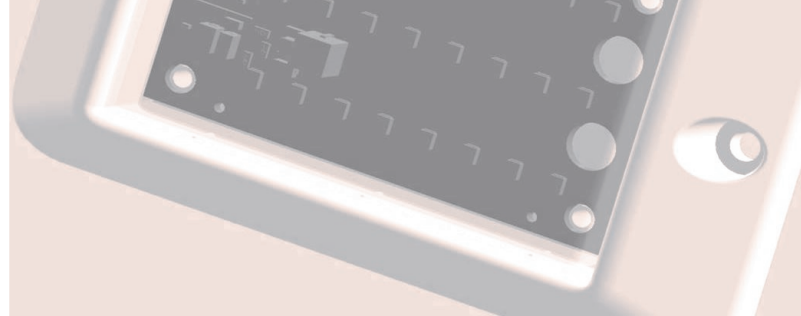


ECE  
REG  
10

LED lighting products for the automotive, marine, rail & aviation industries.

British design. Worldwide distribution.

TECHNOLOGY-LED



Developed for the harshest environments, the STL-100 range of LED interior lighting is available in non-switched, TouchSense and PIR motion switched versions.

**Ultra-bright illumination**

The high specification metal core PCB design of the STL-100 range allows the LED components to operate reliably at higher light outputs, providing the user “best in class” illumination. Our clever design uses a high density of LED components spread over a large diffused illumination area, ensuring both a better optical performance and an improved thermal management system that is critical for a long product life. The constant current electronic control of the LED’s prevents electronic damage and ensures a smooth and consistent illumination at differing voltages.

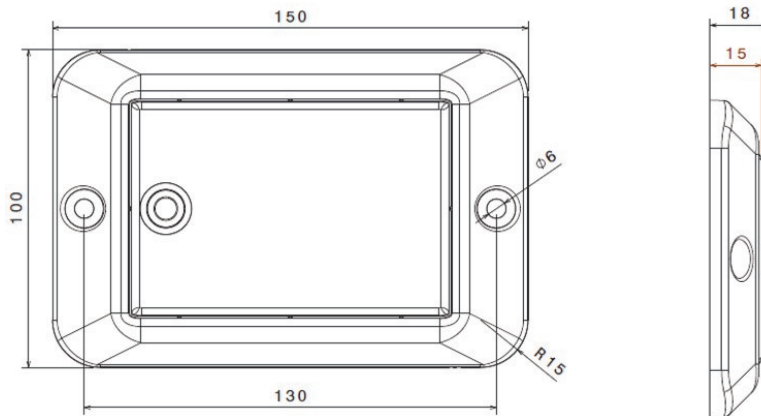
**Hermetically sealed for life**

Installed in vehicle position , the STL-100 lamp will meet the harsh requirements of IP69K, withstanding submersion and pressure washing.

With the use of Ultrasonic Plastic Welding Technology to seal the lens and housing, each lamp is pressure tested for conformity after manufacture and validated prior to release.

**OEM compliant**

Suitable for use in OEM applications, the STL-100 has been developed for compliance with the EMC requirements of ECE Regulation 10.05 as well as the increasingly stringent requirements from vehicle manufacturers on quiescent current draws from 3rd party equipment. The STL-100 range is also suitable for use in vehicle cabin areas that require conformity with the tough legislative regulations for external projections that help prevent injury to occupants of the vehicle.



Part code	12v	24v	10-30v	Non-switched	Switched	PIR
<b>STL.100.VV</b>			✓	✓		
<b>STL.101.VV</b>			✓		✓	
<b>STL.102.VV</b>			✓			✓

